

For Research Use Only

# CoraLite® Plus 488-conjugated LAMR1/RPSA Monoclonal antibody

Catalog Number:CL488-67324



## Basic Information

<b>Catalog Number:</b> CL488-67324	<b>GenBank Accession Number:</b> BC050688	<b>Purification Method:</b> Thiophilic affinity chromatograph
<b>Size:</b> 100ul , Concentration: 1000 ug/ml by Nanodrop;	<b>GeneID (NCBI):</b> 3921	<b>CloneNo.:</b> 2A9A1
<b>Source:</b> Mouse	<b>UNIPROT ID:</b> P08865	<b>Recommended Dilutions:</b> IF/ICC 1:50-1:500
<b>Isotype:</b> IgM	<b>Full Name:</b> ribosomal protein SA	<b>Excitation/Emission maxima wavelengths:</b> 493 nm / 522 nm
<b>Immunogen Catalog Number:</b> AG6190	<b>Calculated MW:</b> 33 kDa	
	<b>Observed MW:</b> 37-40 kDa	

## Applications

<b>Tested Applications:</b> IF/ICC	<b>Positive Controls:</b> IF/ICC : A549 cells,
<b>Species Specificity:</b> human, mouse, rat	

## Background Information

The ribosomal protein SA (RPSA), previously named 67 kD laminin receptor(67LR), 37 kD laminin receptor precursor (37LRP) and p40 ribosome-associated protein, is a multifunctional protein, that plays a role in a number of pathological processes, such as cancer and prion diseases. It is overexpressed in various cancer cell lines, and the level of the laminin receptor transcript is higher in colon carcinoma tissue and lung cancer cell line than their normal counterparts.

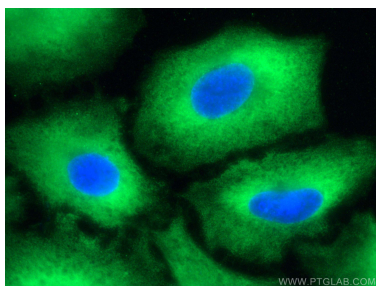
## Storage

**Storage:**  
Store at -20°C. Avoid exposure to light. Stable for one year after shipment.  
**Storage Buffer:**  
PBS with 50% Glycerol, 0.05% Proclin300, 0.5% BSA, pH 7.3.  
Aliquoting is unnecessary for -20°C storage

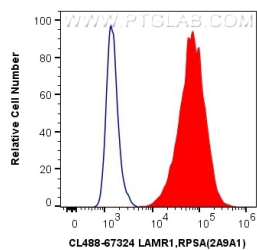
For technical support and original validation data for this product please contact:  
T: 1 (888) 4PTGLAB (1-888-478-4522) (toll free in USA), or 1(312) 455-8498 (outside USA)  
E: [proteintech@ptglab.com](mailto:proteintech@ptglab.com)  
W: [ptglab.com](http://ptglab.com)

This product is exclusively available under Proteintech Group brand and is not available to purchase from any other manufacturer.

## Selected Validation Data



Immunofluorescent analysis of (-20°C Methanol) fixed A549 cells using Coralite® Plus 488 LAMR1/RPSA antibody (CL488-67324, Clone: 2A9A1) at dilution of 1:200.



1X10<sup>6</sup> HepG2 cells were intracellularly stained with 0.8 ug Coralite® Plus 488 Anti-Human LAMR1/RPSA (CL488-67324, Clone:2A9A1) (red), or 0.8 ug Isotype Control. Cells were fixed with 4% PFA and permeabilized with Flow Cytometry Perm Buffer (PF00011-C).