

For Research Use Only

CoraLite®488-conjugated GSK3B Monoclonal antibody



Catalog Number:CL488-67329

Basic Information

Catalog Number: CL488-67329	GenBank Accession Number: BC000251	Purification Method: Protein G purification
Size: 100UL , Concentration: 1000 µg/ml by 2932 Nanodrop;	GeneID (NCBI): 2932	CloneNo.: 2E9E4
Source: Mouse	Full Name: glycogen synthase kinase 3 beta	Recommended Dilutions: IF 1:50-1:500
Isotype: IgG1	Calculated MW: 433 aa, 48 kDa	Excitation/Emission maxima wavelengths: 488 nm/515 nm
Immunogen Catalog Number: AG17320	Observed MW: 46-48 kDa	

Applications

Tested Applications: IF	Positive Controls: IF : HeLa cells,
Species Specificity: Human	

Background Information

Glycogen synthase kinase-3 (GSK3) is a proline-directed serine-threonine kinase that was initially identified as a phosphorylating and inactivating glycogen synthase .GSK3B is involved in energy metabolism, neuronal cell development, and body pattern formation.In skeletal muscle, it contributes to insulin regulation of glycogen synthesis by phosphorylating and inhibiting GYS1 activity and hence glycogen synthesis. Researches showed that the crystal structure of human GSK3B, expressed in insect cells, at 2.8-angstrom resolution .

Storage

Storage:
Store at -20°C. Avoid exposure to light.
Storage Buffer:
PBS with 50% Glycerol, 0.05% Proclin300, 0.5% BSA, pH 7.3.
Aliquoting is unnecessary for -20° C storage

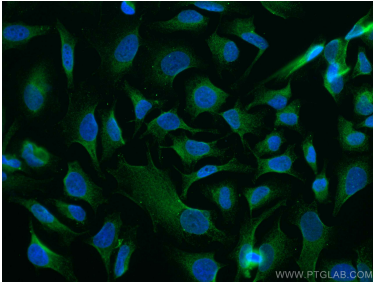
For technical support and original validation data for this product please contact:

T: 1 (888) 4PTGLAB (1-888-478-4522) (toll free
in USA), or 1(312) 455-8498 (outside USA)

E: proteintech@ptglab.com
W: ptglab.com

This product is exclusively available under Proteintech Group brand and is not available to purchase from any other manufacturer.

Selected Validation Data



Immunofluorescent analysis of (4% PFA) fixed HeLa cells using CoraLite®488 GSK3B antibody (CL488-67329, Clone: 2E9E4) at dilution of 1:100.