

For Research Use Only

CoraLite® Plus 488-conjugated MAP2K4 Monoclonal antibody

Catalog Number: CL488-67333



Basic Information

Catalog Number:

CL488-67333

Size:

100ul , Concentration: 1000 ug/ml by
Nanodrop;

Source:

Mouse

Isotype:

IgG2b

Immunogen Catalog Number:

AG11348

GenBank Accession Number:

BC036032

GeneID (NCBI):

6416

UNIPROT ID:

P45985

Full Name:

mitogen-activated protein kinase
kinase 4

Calculated MW:

399 aa, 44 kDa

Observed MW:

44-50 kDa

Purification Method:

Protein A purification

CloneNo.:

2E4C1

Recommended Dilutions:

IF/ICC 1:50-1:500

Excitation/Emission maxima wavelengths:

493 nm / 522 nm

Applications

Tested Applications:

IF/ICC, FC (Intra)

Species Specificity:

human

Positive Controls:

IF/ICC : HepG2 cells,

Background Information

MEK4 is also named as JNKK1, MAP2K4, MKK4, PRKMK4, SEK1, SERK1, SKK1 and belongs to the protein kinase superfamily. MEK4 is a member of the mitogen-activated protein kinase family, originally identified as a kinase involved in the stress-activated protein kinase pathway by directly phosphorylating c-Jun NH 2-terminal kinase. This protein has 2 isoforms produced by alternative splicing.

Storage

Storage:

Store at -20°C. Avoid exposure to light. Stable for one year after shipment.

Storage Buffer:

PBS with 50% Glycerol, 0.05% Proclin300, 0.5% BSA, pH 7.3.

Aliquoting is unnecessary for -20°C storage

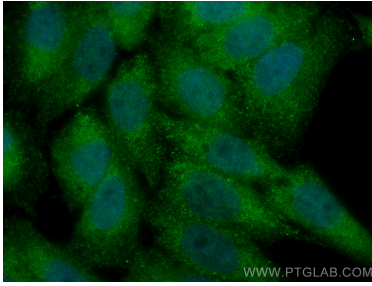
For technical support and original validation data for this product please contact:

T: 1 (888) 4PTGLAB (1-888-478-4522) (toll free
in USA), or 1(312) 455-8498 (outside USA)

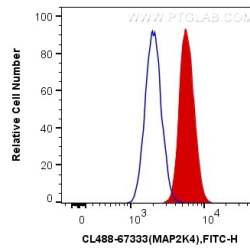
E: proteintech@ptglab.com
W: ptglab.com

This product is exclusively available under Proteintech Group brand and is not available to purchase from any other manufacturer.

Selected Validation Data



Immunofluorescent analysis of (4% PFA) fixed HepG2 cells using CoraLite® Plus 488 MAP2K4 antibody (CL488-67333, Clone: 2E4C1) at dilution of 1:200.



1X10⁶ HepG2 cells were intracellularly stained with 0.4 ug CoraLite® Plus 488 Anti-Human MAP2K4 (CL488-67333, Clone:2E4C1) (red), or 0.4 ug Mouse IgG2b Isotype Control (CL488-66360-3, Clone: K11B8C4B5) (blue). Cells were fixed with 4% PFA and permeabilized with Flow Cytometry Perm Buffer (PF00011-C).