

For Research Use Only

# CoraLite® Plus 488-conjugated MTH1 Monoclonal antibody

Catalog Number: **CL488-67443**



## Basic Information

<b>Catalog Number:</b> CL488-67443	<b>GenBank Accession Number:</b> BC014618	<b>Purification Method:</b> Protein G purification
<b>Size:</b> 100ul , Concentration: 1000 ug/ml by Nanodrop;	<b>GeneID (NCBI):</b> 4521	<b>CloneNo.:</b> 2D7G4
<b>Source:</b> Mouse	<b>UNIPROT ID:</b> P36639	<b>Recommended Dilutions:</b> IF/ICC: 1:50-1:500
<b>Isotype:</b> IgG1	<b>Full Name:</b> nudix (nucleoside diphosphate linked moiety X)-type motif 1	<b>FC (Intra):</b> 0.40 ug per 10 <sup>6</sup> cells in a 100 µl suspension
<b>Immunogen Catalog Number:</b> AG9802	<b>Calculated MW:</b> 179aa,20 kDa; 197aa,23 kDa	<b>Excitation/Emission maxima wavelengths:</b> 493 nm / 522 nm
	<b>Observed MW:</b> 19 kDa	

## Applications

<b>Tested Applications:</b> IF/ICC, FC (Intra)	<b>Positive Controls:</b>
<b>Species Specificity:</b> human	<b>IF/ICC :</b> HepG2 cells, <b>FC (Intra) :</b> Jurkat cells,

## Background Information

MTH1, also known as NUDT1 or 8-Oxo-dGTPase, is an important repair enzyme that prevents oxidative stress-induced DNA damage through hydrolyzing mutagenic 8-oxo-dGTP into 8-oxo-dGMP. MTH1 is expressed in postmitotic neurons as well as in proliferative tissues, and it is localized both in the mitochondria and nucleus. MTH1 might be a useful marker of oxidative stress and its level increased upon oxidative stress. Increased expression of MTH1 were also found in various cancer tissues and neurodegenerative diseases.

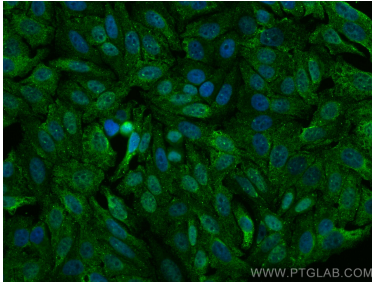
## Storage

**Storage:**  
Store at -20°C. Avoid exposure to light. Stable for one year after shipment.  
**Storage Buffer:**  
PBS with 50% glycerol, 0.05% Proclin300, 0.5% BSA, pH7.3  
**Aliquoting is unnecessary for -20°C storage**

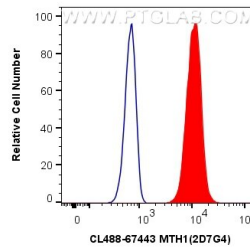
For technical support and original validation data for this product please contact:  
T: 1 (888) 4PTGLAB (1-888-478-4522) (toll free in USA), or 1(312) 455-8498 (outside USA)  
E: [proteintech@ptglab.com](mailto:proteintech@ptglab.com)  
W: [ptglab.com](http://ptglab.com)

This product is exclusively available under Proteintech Group brand and is not available to purchase from any other manufacturer.

## Selected Validation Data



Immunofluorescent analysis of (4% PFA) fixed HepG2 cells using Coralite® Plus 488 MTH1 antibody (CL488-67443, Clone: 2D7G4) at dilution of 1:200.



1X10<sup>6</sup> Jurkat cells were intracellularly stained with 0.4 ug Coralite® Plus 488 Anti-Human MTH1 (CL488-67443, Clone:2D7G4) (red), or 0.4 ug Control Antibody. Cells were fixed and permeabilized with Transcription Factor Staining Buffer Kit (PF00011).