

For Research Use Only

# CoraLite® Plus 488-conjugated RBM15B Monoclonal antibody

Catalog Number:CL488-67506



## Basic Information

Catalog Number:

CL488-67506

Size:

100ul , Concentration: 1000 ug/ml by  
Nanodrop;

Source:

Mouse

Isotype:

IgG1

Immunogen Catalog Number:

AG17853

GenBank Accession Number:

BC001367

GeneID (NCBI):

29890

UNIPROT ID:

Q8NDT2

Full Name:

RNA binding motif protein 15B

Calculated MW:

890 aa, 97 kDa

Observed MW:

105 kDa

Purification Method:

Protein G purification

CloneNo.:

1C2C11

Excitation/Emission maxima  
wavelengths:

493 nm / 522 nm

## Applications

Tested Applications:

FC (Intra)

Species Specificity:

Human

## Background Information

RBM15B, one members of the SPEN (Split-end) family of proteins, have repressor function in several signaling pathways and may bind to RNA through interaction with spliceosome components. Present polyclonal anti-RBM15B antibody was produced by immunizing animals with C-terminus of RBM15B, which homolog with a short form of RBM15B(563aa, ~70kDa).

## Storage

Storage:

Store at -20°C. Avoid exposure to light. Stable for one year after shipment.

Storage Buffer:

PBS with 50% Glycerol, 0.05% Proclin300, 0.5% BSA, pH 7.3.

Aliquoting is unnecessary for -20°C storage

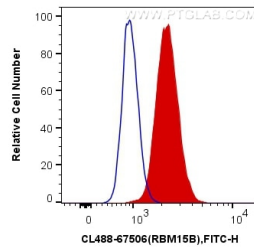
For technical support and original validation data for this product please contact:

T: 1 (888) 4PTGLAB (1-888-478-4522) (toll free  
in USA), or 1(312) 455-8498 (outside USA)

E: [proteintech@ptglab.com](mailto:proteintech@ptglab.com)  
W: [ptglab.com](http://ptglab.com)

This product is exclusively available under Proteintech Group brand and is not available to purchase from any other manufacturer.

## Selected Validation Data



1X10<sup>6</sup> HepG2 cells were intracellularly stained with 0.4 ug CoraLite® Plus 488 Anti-Human RBM15B (CL488-67506, Clone:1C2C11) (red), or 0.4 ug x. Cells were fixed and permeabilized with Transcription Factor Staining Buffer Kit (PF00011).