

For Research Use Only

CoraLite® Plus 488-conjugated TCP1 eta Monoclonal antibody

Catalog Number: CL488-67540

Featured Product



Basic Information

Catalog Number:

CL488-67540

Size:

100ul , Concentration: 1000 ug/ml by Nanodrop;

Source:

Mouse

Isotype:

IgG1

Immunogen Catalog Number:

AG9502

GenBank Accession Number:

BC019296

GeneID (NCBI):

10574

UNIPROT ID:

Q99832

Full Name:

chaperonin containing TCP1, subunit 7 (eta)

Calculated MW:

543 aa, 59 kDa

Observed MW:

59 kDa

Purification Method:

Protein G purification

CloneNo.:

2C1G1

Recommended Dilutions:

IF/ICC: 1:50-1:500

FC (Intra): 0.40 ug per 10⁶ cells in a 100 µl suspension

Excitation/Emission maxima wavelengths:

493 nm / 522 nm

Applications

Tested Applications:

IF/ICC, FC (Intra)

Species Specificity:

human, mouse

Positive Controls:

IF/ICC : U2OS cells,

FC (Intra) : U2OS cells,

Background Information

CCT7 is a subunit of CCT complex-a large cytosolic chaperonin complex composed of two hetero-oligomeric stacked rings able to interact with nascent polypeptides, which mediates protein folding in an ATP-dependent manner and prevents aggregation in eukaryotes. Each ring consists of eight different subunits (CCT1 to CCT8). CCT7 is involved in preventing aggregation of GPCRs and in regulating their expression, maturation, and transport to the cell surface.

Storage

Storage:

Store at -20°C. Avoid exposure to light. Stable for one year after shipment.

Storage Buffer:

PBS with 50% glycerol, 0.05% Proclin300, 0.5% BSA, pH7.3

Aliquoting is unnecessary for -20°C storage

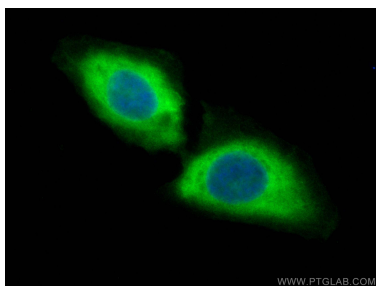
For technical support and original validation data for this product please contact:

T: 1 (888) 4PTGLAB (1-888-478-4522) (toll free in USA), or 1(312) 455-8498 (outside USA)

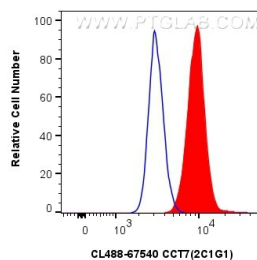
E: proteintech@ptglab.com
W: ptglab.com

This product is exclusively available under Proteintech Group brand and is not available to purchase from any other manufacturer.

Selected Validation Data



Immunofluorescent analysis of (-20°C Methanol) fixed U2OS cells using CoraLite® Plus 488 CCT7 antibody (CL488-67540, Clone: 2C1G1) at dilution of 1:200.



1x10⁶ U2OS cells were intracellularly stained with 0.4 ug CoraLite® Plus 488-conjugated CCT7 Monoclonal antibody (CL488-67540, Clone:2C1G1) (red), or 0.4 ug CoraLite® Plus 488 Mouse IgG1 Isotype Control (1F8D3) (CL488-66360-1, Clone: 1F8D3) (blue). Cells were fixed with 4% PFA and permeabilized with Flow Cytometry Perm Buffer (PF00011-C).