

# CoraLite® Plus 488-conjugated ASL Monoclonal antibody

Catalog Number: **CL488-67692**

## Basic Information

**Catalog Number:**

CL488-67692

**Size:**

100ul , Concentration: 1000 µg/ml by Nanodrop;

**Source:**

Mouse

**Isotype:**

IgG2b

**Immunogen Catalog Number:**

AG30517

**GenBank Accession Number:**

BC008195

**GeneID (NCBI):**

435

**UNIPROT ID:**

P04424

**Full Name:**

argininosuccinate lyase

**Calculated MW:**

55 kDa

**Observed MW:**

50 kDa

**Purification Method:**

Protein A purification

**CloneNo.:**

1G9H3

**Excitation/Emission maxima wavelengths:**

493 nm / 522 nm

## Applications

**Tested Applications:**

FC (Intra)

**Species Specificity:**

Human, mouse, rat, pig

## Background Information

Argininosuccinate lyase (ASL), one of the significant UC enzymes, catalyzes argininosuccinate cleavage to generate arginine and fumarate. Arginine is then catalyzed by arginase to ornithine and polyamines, which are found to promote cancer cell proliferation and growth. Importantly, ASL ectopic expression is closely associated with poor prognosis of colorectal cancer, hepatocellular. ASL is a member of the aspartase/fumarase superfamily. Enzymes of this superfamily share similar tetrameric structure and active site, though the sequence identities between different members are quite low (less than 20%). Members of this superfamily have been recognised as drug targets for microbial infections. ASL is a 464-amino-acid enzyme with a molecular mass of 49.7 kDa. (PMID: 22386318 PMID: 31018905)

## Storage

**Storage:**

Store at -20°C. Avoid exposure to light. Stable for one year after shipment.

**Storage Buffer:**

PBS with 50% Glycerol, 0.05% Proclin300, 0.5% BSA, pH 7.3.

Aliquoting is unnecessary for -20°C storage

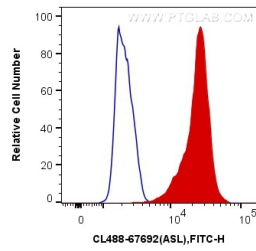
For technical support and original validation data for this product please contact:

T: 1 (888) 4PTGLAB (1-888-478-4522) (toll free in USA), or 1(312) 455-8498 (outside USA)

E: [proteintech@ptglab.com](mailto:proteintech@ptglab.com)W: [ptglab.com](http://ptglab.com)

This product is exclusively available under Proteintech Group brand and is not available to purchase from any other manufacturer.

## Selected Validation Data



1X10<sup>6</sup> K-562 cells were intracellularly stained with 0.4 ug CoraLite® Plus 488 Anti-Human ASL (CL488-67692, Clone:1G9H3) (red), or 0.4 ug Mouse IgG2b Isotype Control (CL488-66360-3, Clone: K11B8C4B5) (blue). Cells were fixed with 4% PFA and permeabilized with Flow Cytometry Perm Buffer (PF00011-C).