

For Research Use Only

CoraLite® Plus 488-conjugated SKP1 Monoclonal antibody

Catalog Number: CL488-67745



Basic Information

Catalog Number: CL488-67745	GenBank Accession Number: BC009839	Purification Method: Protein A purification
Size: 100ul , Concentration: 1000 ug/ml by Nanodrop;	GeneID (NCBI): 6500	CloneNo.: 1D5G4
Source: Mouse	UNIPROT ID: P63208	Recommended Dilutions: IF/ICC 1:50-1:500
Isotype: IgG2b	Full Name: S-phase kinase-associated protein 1	Excitation/Emission maxima wavelengths: 493 nm / 522 nm
Immunogen Catalog Number: AG30709	Calculated MW: 19 kDa	

Applications

Tested Applications: IF/ICC	Positive Controls: IF/ICC : MCF-7 cells,
Species Specificity: Human	

Background Information

SKP1(S-phase kinase-associated protein 1) is also named as EMC19, OCP2, SKP1A, TCEB1L, belongs to the SKP1 family. It is an essential component of the SCF (SKP1-CUL1-F-box protein) ubiquitin ligase complex, which mediates the ubiquitination of proteins involved in cell cycle progression, signal transduction and transcription.

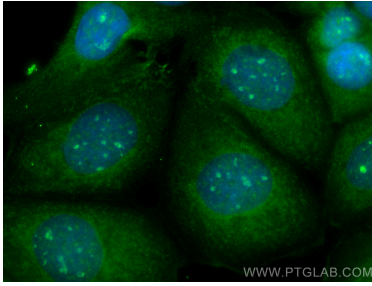
Storage

Storage:
Store at -20°C. Avoid exposure to light. Stable for one year after shipment.
Storage Buffer:
PBS with 50% Glycerol, 0.05% Proclin300, 0.5% BSA, pH 7.3.
Aliquoting is unnecessary for -20°C storage

For technical support and original validation data for this product please contact:
T: 1 (888) 4PTGLAB (1-888-478-4522) (toll free in USA), or 1(312) 455-8498 (outside USA)
E: proteintech@ptglab.com
W: ptglab.com

This product is exclusively available under Proteintech Group brand and is not available to purchase from any other manufacturer.

Selected Validation Data



Immunofluorescent analysis of (-20°C Methanol) fixed MCF-7 cells using CoraLite® Plus 488 SKP1 antibody (CL488-67745, Clone: 1D5G4) at dilution of 1:200.