

For Research Use Only

# CoraLite®488-conjugated EED Monoclonal antibody



Catalog Number: CL488-67756

## Basic Information

Catalog Number:

CL488-67756

Size:

100ul

Source:

Mouse

Isotype:

IgG2b

Immunogen Catalog Number:

AG10369

GenBank Accession Number:

BC068995

GeneID (NCBI):

8726

Full Name:

embryonic ectoderm development

Calculated MW:

466 aa, 53 kDa

Purification Method:

Protein A purification

CloneNo.:

1D11D4

Recommended Dilutions:

IF 1:50-1:500

Excitation/Emission maxima  
wavelengths:

488 nm/515 nm

## Applications

Tested Applications:

FC, IF

Species Specificity:

Human, mouse

Positive Controls:

IF : mouse testis tissue,

## Background Information

EED is a member of the Polycomb-group (PcG) family. PcG family members form multimeric protein complexes, which are involved in maintaining the transcriptional repressive state of genes over successive cell generations. This protein interacts with enhancer of zeste 2, the cytoplasmic tail of integrin beta7, immunodeficiency virus type 1 (HIV-1) MA protein, and histone deacetylase proteins. This protein mediates repression of gene activity through histone deacetylation, and may act as a specific regulator of integrin function. EED has three isoforms, with the molecular weight of isoforms 1/2/3: 50/53/46 kDa.

## Storage

Storage:

Store at -20°C. Avoid exposure to light.

Storage Buffer:

PBS with 50% Glycerol, 0.05% Proclin300, 0.5% BSA, pH 7.3.

Aliquoting is unnecessary for -20°C storage

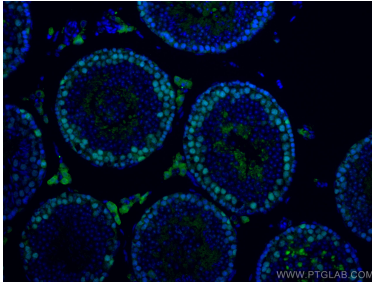
For technical support and original validation data for this product please contact:

T: 1 (888) 4PTGLAB (1-888-478-4522) (toll free  
in USA), or 1(312) 455-8498 (outside USA)

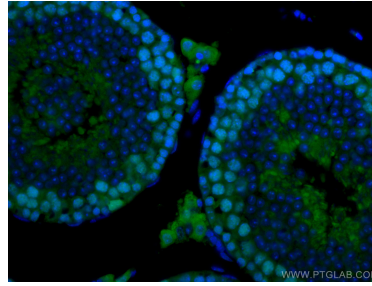
E: [proteintech@ptglab.com](mailto:proteintech@ptglab.com)  
W: [ptglab.com](http://ptglab.com)

This product is exclusively available under Proteintech Group brand and is not available to purchase from any other manufacturer.

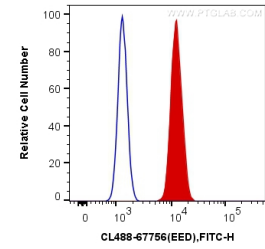
## Selected Validation Data



Immunofluorescent analysis of (4% PFA) fixed mouse testis tissue using CoraLite®488 EED antibody (CL488-67756, Clone: 1D11D4) at dilution of 1:200.



Immunofluorescent analysis of (4% PFA) fixed mouse testis tissue using CoraLite®488 EED antibody (CL488-67756, Clone: 1D11D4) at dilution of 1:200.



1X10<sup>6</sup> HeLa cells were intracellularly stained with 0.2 ug CoraLite®488 Anti-Human EED (CL488-67756, Clone:1D11D4) (red), or 0.2 ug Mouse IgG2b Isotype Control (CL488-66360-3, Clone: K11B8C4B5) (blue). Cells were fixed and permeabilized with Transcription Factor Staining Buffers.