

For Research Use Only

CoraLite® Plus 488-conjugated PPP2R2A/B/C Monoclonal antibody

Catalog Number: CL488-67783



Basic Information

Catalog Number:

CL488-67783

Size:

100ul , Concentration: 1000 ug/ml by
Nanodrop;

Source:

Mouse

Isotype:

IgG1

Immunogen Catalog Number:

AG30774

GenBank Accession Number:

BC031790

GeneID (NCBI):

5521

UNIPROT ID:

Q00005

Full Name:

protein phosphatase 2 (formerly 2A),
regulatory subunit B, beta isoform

Calculated MW:

443 aa, 52 kDa

Observed MW:

52 kDa

Purification Method:

Protein G purification

CloneNo.:

2E1D5

Recommended Dilutions:

IF/ICC: 1:50-1:500

FC (Intra): 0.40 ug per 10⁶ cells in a
100 µl suspension

Excitation/Emission maxima wavelengths:

493 nm / 522 nm

Applications

Tested Applications:

IF/ICC, FC (Intra)

Species Specificity:

human, mouse, rat, pig, rabbit

Positive Controls:

IF/ICC : SH-SY5Y cells,

FC (Intra) : HeLa cells,

Background Information

The PPP2R2B gene encodes a deduced 443-amino acid protein of approximately 52 kDa, which is a brain-specific regulatory subunit B of protein phosphatase 2. PPP2R2B is a Subunit of PP2A, a highly conserved constitutive enzyme (PMID:11719278). PPP2R2B (Bβ) is an important regulator of protein phosphatase 2A (PP2A) activity in the brain. Through differential promoter usage and alternative splicing, two major isoforms Bβ1 and Bβ2 with divergent sub-cellular targeting N termini are produced. Bβ plays an important role in neuronal survival. It has 5 isoforms produced by alternative splicing.

Storage

Storage:

Store at -20°C. Avoid exposure to light. Stable for one year after shipment.

Storage Buffer:

PBS with 50% glycerol, 0.05% Proclin300, 0.5% BSA, pH7.3

Aliquoting is unnecessary for -20°C storage

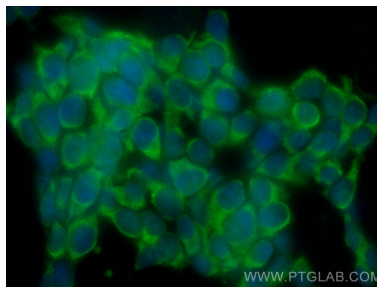
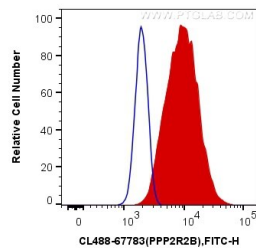
For technical support and original validation data for this product please contact:

T: 1 (888) 4PTGLAB (1-888-478-4522) (toll free
in USA), or 1(312) 455-8498 (outside USA)

E: proteintech@ptglab.com
W: ptglab.com

This product is exclusively available under Proteintech Group brand and is not available to purchase from any other manufacturer.

Selected Validation Data



1X10⁶ HeLa cells were intracellularly stained with 0.4 ug Coralite® Plus 488 Anti-Human PPP2R2B (CL488-67783, Clone:2E1D5) (red), or 0.4 ug Control Antibody. Cells were fixed with 4% PFA and permeabilized with Flow Cytometry Perm Buffer (PF00011-C).

Immunofluorescent analysis of (-20°C Ethanol) fixed SH-SY5Y cells using Coralite® Plus 488 PPP2R2A/B/C antibody (CL488-67783, Clone: 2E1D5) at dilution of 1:200.