

For Research Use Only

CoraLite® Plus 488-conjugated FKBP5 Monoclonal antibody

Catalog Number:CL488-67874



Basic Information

Catalog Number:

CL488-67874

Size:

100ul , Concentration: 1000 ug/ml by Nanodrop;

Source:

Mouse

Isotype:

IgG2b

Immunogen Catalog Number:

AG5514

GenBank Accession Number:

BC042605

GeneID (NCBI):

2289

UNIPROT ID:

Q13451

Full Name:

FK506 binding protein 5

Calculated MW:

457 aa, 51 kDa

Observed MW:

51 kDa

Purification Method:

Protein A purification

CloneNo.:

3B11F3

Recommended Dilutions:

IF/ICC 1:50-1:500

Excitation/Emission maxima wavelengths:

493 nm / 522 nm

Applications

Tested Applications:

IF/ICC, FC (Intra)

Species Specificity:

human, mouse, rat

Positive Controls:

IF/ICC : HeLa cells,

Background Information

FKBP5(Peptidyl-prolyl cis-trans isomerase FKBP5) interacts with functionally mature heterooligomeric progesterone receptor complexes along with HSP90 and TEBP. Unlike the predominant T-cell expression of the mouse protein, FKBP5 is expressed as a 51-kD protein in a variety of tissues but not in brain, colon, or lung(PMID: 9125197).

Storage

Storage:

Store at -20°C. Avoid exposure to light. Stable for one year after shipment.

Storage Buffer:

PBS with 50% Glycerol, 0.05% Proclin300, 0.5% BSA, pH 7.3.

Aliquoting is unnecessary for -20°C storage

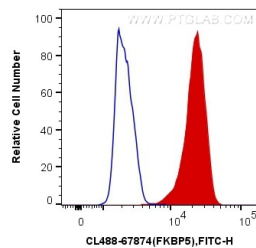
For technical support and original validation data for this product please contact:

T: 1 (888) 4PTGLAB (1-888-478-4522) (toll free in USA), or 1(312) 455-8498 (outside USA)

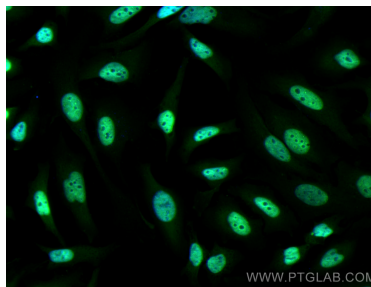
E: proteintech@ptglab.com
W: ptglab.com

This product is exclusively available under Proteintech Group brand and is not available to purchase from any other manufacturer.

Selected Validation Data



1X10⁶ K-562 cells were intracellularly stained with 0.4 µg CoraLite® Plus 488 Anti-Human FKBP5 (CL488-67874, Clone:3B11F3) (red), or 0.4 µg Mouse IgG2b Isotype Control (CL488-66360-3, Clone: K11B8C4B5) (blue). Cells were fixed with 4% PFA and permeabilized with Flow Cytometry Perm Buffer (PF00011-C).



Immunofluorescent analysis of (4% PFA) fixed HeLa cells using CoraLite® Plus 488 FKBP5 antibody (CL488-67874, Clone: 3B11F3) at dilution of 1:200.