

For Research Use Only

# CoraLite® Plus 488-conjugated ARHGEF16 Monoclonal antibody

Catalog Number: CL488-67975



## Basic Information

<b>Catalog Number:</b> CL488-67975	<b>GenBank Accession Number:</b> BC002681	<b>Purification Method:</b> Protein A purification
<b>Size:</b> 100ul , Concentration: 1000 ug/ml by Nanodrop;	<b>GeneID (NCBI):</b> 27237	<b>CloneNo.:</b> 1D8E3
<b>Source:</b> Mouse	<b>UNIPROT ID:</b> Q5VV41	<b>Recommended Dilutions:</b> IF/ICC: 1:50-1:500
<b>Isotype:</b> IgG2b	<b>Full Name:</b> Rho guanine exchange factor (GEF) 16	<b>FC (Intra):</b> 0.40 ug per 10 <sup>6</sup> cells in a 100 µl suspension
<b>Immunogen Catalog Number:</b> AG28675	<b>Calculated MW:</b> 80 kDa	<b>Excitation/Emission maxima wavelengths:</b> 493 nm / 522 nm
	<b>Observed MW:</b> 80 kDa	

## Applications

<b>Tested Applications:</b> IF/ICC, FC (Intra)	<b>Positive Controls:</b> IF/ICC : MCF-7 cells,
<b>Species Specificity:</b> human	<b>FC (Intra) :</b> MCF-7 cells,

## Background Information

Small GTPases of the Rho family are critical regulators of various cellular functions including actin cytoskeleton organization, activation of kinase cascades, mitogenesis, transcriptional activation and stimulation of DNA synthesis. Rho proteins cycle between a biologically active GTP-bound state and an inactive GDP-bound state. Rho guanine nucleotide exchange factor (GEF) has a crucial role in activating small GTPase by exchange GDP for GTP. ARGEF16 is one of the multiple GEF members. Although the specific function of this protein is not known yet, it is thought to be involved in protein-protein and protein-lipid interactions.

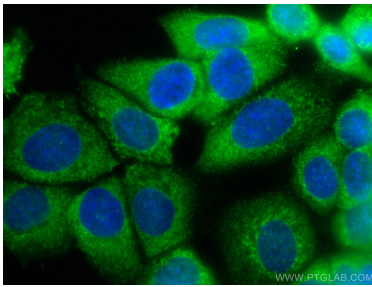
## Storage

**Storage:**  
Store at -20°C. Avoid exposure to light. Stable for one year after shipment.  
**Storage Buffer:**  
PBS with 50% glycerol, 0.05% Proclin300, 0.5% BSA, pH7.3  
**Aliquoting is unnecessary for -20°C storage**

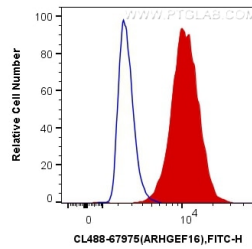
For technical support and original validation data for this product please contact:  
T: 1 (888) 4PTGLAB (1-888-478-4522) (toll free in USA), or 1(312) 455-8498 (outside USA)  
E: [proteintech@ptglab.com](mailto:proteintech@ptglab.com)  
W: [ptglab.com](http://ptglab.com)

This product is exclusively available under Proteintech Group brand and is not available to purchase from any other manufacturer.

## Selected Validation Data



Immunofluorescent analysis of (-20°C Methanol) fixed MCF-7 cells using CoraLite® Plus 488 ARHGEF16 antibody (CL488-67975, Clone: 1D8E3) at dilution of 1:200.



1X10<sup>6</sup> MCF-7 cells were intracellularly stained with 0.4 ug CoraLite® Plus 488 Anti-Human ARHGEF16 (CL488-67975, Clone:1D8E3) (red), or 0.4 ug Mouse IgG2b Isotype Control (CL488-66360-3, Clone: K11B8C4B5) (blue). Cells were fixed with 4% PFA and permeabilized with Flow Cytometry Perm Buffer (PF00011-C).