

For Research Use Only

CoraLite® Plus 488-conjugated MMP7 Monoclonal antibody



Catalog Number: **CL488-67990**

Basic Information

Catalog Number:

CL488-67990

Size:

100ul , Concentration: 1000 µg/ml by
Nanodrop;

Source:

Mouse

Isotype:

IgG2a

Immunogen Catalog Number:

AG0550

GenBank Accession Number:

BC003635

GeneID (NCBI):

4316

UNIPROT ID:

P09237

Full Name:

matrix metalloproteinase 7
(matrilysin, uterine)

Calculated MW:

29 kDa

Observed MW:

27-30 kDa

Purification Method:

Protein A purification

CloneNo.:

2E6D6

Recommended Dilutions:

IF-P 1:50-1:500

**Excitation/Emission maxima
wavelengths:**

493 nm / 522 nm

Applications

Tested Applications:

IF

Species Specificity:

Human

Positive Controls:

IF-P : human pancreas cancer tissue,

Storage

Storage:

Store at -20°C. Avoid exposure to light. Stable for one year after shipment.

Storage Buffer:

PBS with 50% Glycerol, 0.05% Proclin300, 0.5% BSA, pH 7.3.

Aliquoting is unnecessary for -20°C storage

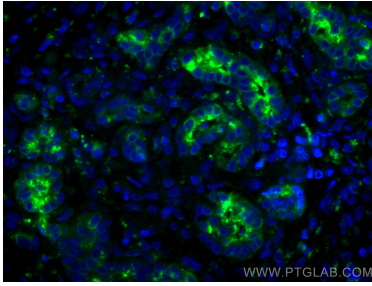
For technical support and original validation data for this product please contact:

T: 1 (888) 4PTGLAB (1-888-478-4522) (toll free
in USA), or 1(312) 455-8498 (outside USA)

E: proteintech@ptglab.com
W: ptglab.com

This product is exclusively available under Proteintech
Group brand and is not available to purchase from any
other manufacturer.

Selected Validation Data



Immunofluorescent analysis of (4% PFA) fixed human pancreas cancer tissue using CoraLite® Plus 488 MMP7 antibody (CL488-67990, Clone: 2E6D6) at dilution of 1:200.