

For Research Use Only

CoraLite® Plus 488-conjugated CRMP1 Monoclonal antibody

Catalog Number:CL488-68021



Basic Information

Catalog Number:	GenBank Accession Number:	Purification Method:
CL488-68021	BC000252	Protein A purification
Size:	GeneID (NCBI):	CloneNo.:
100ul , Concentration: 1000 ug/ml by Nanodrop;	1400	2F4G5
Source:	UNIPROT ID:	Recommended Dilutions:
Mouse	Q14194	IF/ICC 1:50-1:500
Isotype:	Full Name:	Excitation/Emission maxima wavelengths:
IgG2a	collapsin response mediator protein 1	493 nm / 522 nm
Immunogen Catalog Number:	Calculated MW:	
AG30090	62 kDa	
	Observed MW:	
	62 kDa	

Applications

Tested Applications:	Positive Controls:
IF/ICC, FC (Intra)	IF/ICC : SH-SY5Y cells,
Species Specificity:	
human, mouse, rat, pig, rabbit, chicken	

Background Information

CRMP1 (Collapsin response mediator protein 1) is also named as DPYSL1, ULIP3, DRP-1 and belongs to the collapsin response mediator protein family, which are a family of five cytoplasmic proteins predominantly expressed in the developing nervous system. CRMP1, the predicted 62 kDa protein and its 74 kDa isoform corresponding to its N-terminal splice variant already described for embryonic, neonatal, and adult brain of the rat are evidenced in the cortex of adult mouse (PMID:15834957). This protein is involved in invasion, and aggressiveness of prolactin pituitary tumors.

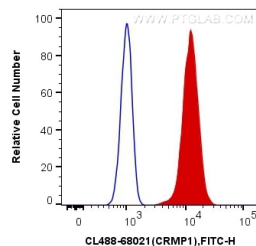
Storage

Storage:
Store at -20°C. Avoid exposure to light. Stable for one year after shipment.
Storage Buffer:
PBS with 50% Glycerol, 0.05% Proclin300, 0.5% BSA, pH 7.3.
Aliquoting is unnecessary for -20°C storage

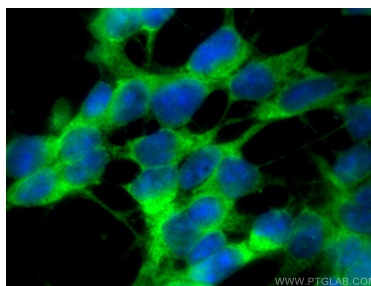
For technical support and original validation data for this product please contact:
T: 1 (888) 4PTGLAB (1-888-478-4522) (toll free in USA), or 1(312) 455-8498 (outside USA)
E: proteintech@ptglab.com
W: ptglab.com

This product is exclusively available under Proteintech Group brand and is not available to purchase from any other manufacturer.

Selected Validation Data



1X10⁶ U2OS cells were intracellularly stained with 0.4 ug CoraLite® Plus 488 Anti-Human CRMP1 (CL488-68021, Clone:2F4G5) (red), or 0.4 ug Control Antibody. Cells were fixed with 4% PFA and permeabilized with Flow Cytometry Perm Buffer (PF00011-C).



Immunofluorescent analysis of (-20°C Ethanol) fixed SH-SY5Y cells using CoraLite® Plus 488 CRMP1 antibody (CL488-68021, Clone: 2F4G5) at dilution of 1:200.