

For Research Use Only

# CoraLite® Plus 488-conjugated PGK1 Monoclonal antibody

Catalog Number: CL488-68035



## Basic Information

<b>Catalog Number:</b> CL488-68035	<b>GenBank Accession Number:</b> BC103752	<b>Purification Method:</b> Protein G purification
<b>Size:</b> 100ul , Concentration: 1000 ug/ml by Nanodrop;	<b>GeneID (NCBI):</b> 5230	<b>CloneNo.:</b> 1B2F3
<b>Source:</b> Mouse	<b>UNIPROT ID:</b> P00558	<b>Recommended Dilutions:</b> IF/ICC 1:50-1:500
<b>Isotype:</b> IgG1	<b>Full Name:</b> phosphoglycerate kinase 1	<b>Excitation/Emission maxima wavelengths:</b> 493 nm / 522 nm
<b>Immunogen Catalog Number:</b> AG12099	<b>Calculated MW:</b> 417 aa, 45 kDa	
	<b>Observed MW:</b> 40-45 kDa	

## Applications

<b>Tested Applications:</b> IF/ICC, FC (Intra)	<b>Positive Controls:</b> IF/ICC : A431 cells, HepG2 cells
<b>Species Specificity:</b> human	

## Background Information

PGK1, also known as PGKA, belongs to the phosphoglycerate kinase family. PGK1 is the first ATP-generating enzyme in glycolysis, which catalyzes the conversion of 1,3-diphosphoglycerate (1,3-BPG) to 3-phosphoglycerate (3-PG) and produces one molecule of ATP. PGK1 has other functions besides regulating glycolytic metabolism, including mediating autophagy initiation, DNA replication and repair in mammal cell nuclei. PGK1 has 2 isoforms with the molecular mass of 41 and 45 kDa (PMID: 31815035, PMID: 31911580).

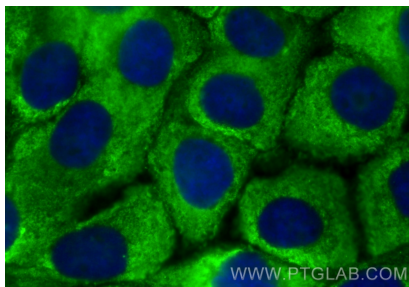
## Storage

**Storage:**  
Store at -20°C. Avoid exposure to light. Stable for one year after shipment.  
**Storage Buffer:**  
PBS with 50% glycerol, 0.05% Proclin300, 0.5% BSA, pH7.3  
**Aliquoting is unnecessary for -20°C storage**

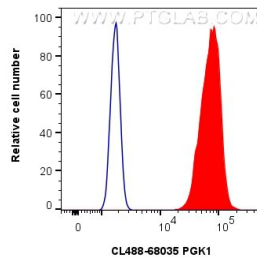
For technical support and original validation data for this product please contact:  
T: 1 (888) 4PTGLAB (1-888-478-4522) (toll free in USA), or 1(312) 455-8498 (outside USA)  
E: [proteintech@ptglab.com](mailto:proteintech@ptglab.com)  
W: [ptglab.com](http://ptglab.com)

This product is exclusively available under Proteintech Group brand and is not available to purchase from any other manufacturer.

## Selected Validation Data



Immunofluorescent analysis of (-20°C Methanol) fixed A431 cells using CoraLite® Plus 488 PGK1 antibody (CL488-68035, Clone: 1B2F3) at dilution of 1:200.



1x10<sup>6</sup> HeLa cells were intracellularly stained with 0.8 ug CoraLite® Plus 488-conjugated PGK1 Monoclonal antibody (CL488-68035, Clone:1B2F3) (red), or 0.8 ug CoraLite® Plus 488 Mouse IgG1 Isotype Control (1F8D3) (CL488-66360-1, Clone: 1F8D3) (blue). Cells were fixed with 4% PFA and permeabilized with Flow Cytometry Perm Buffer (PF00011-C).