

For Research Use Only

CoraLite® Plus 488-conjugated TBC1D4 Monoclonal antibody

Catalog Number:CL488-68063



Basic Information

Catalog Number: CL488-68063	GenBank Accession Number: BC151239	Purification Method: Protein G purification
Size: 100ul , Concentration: 1000 ug/ml by Nanodrop;	GeneID (NCBI): 9882	CloneNo.: 1E2H2
Source: Mouse	UNIPROT ID: O60343	Recommended Dilutions: IF/ICC 1:250-1:1000
Isotype: IgG1	Full Name: TBC1 domain family, member 4	Excitation/Emission maxima wavelengths: 493 nm / 522 nm
Immunogen Catalog Number: AG20341	Calculated MW: 1299 aa, 147 kDa	
	Observed MW: 160 kDa	

Applications

Tested Applications: IF/ICC	Positive Controls: IF/ICC : HeLa cells,
Species Specificity: Human	

Background Information

TBC1D4, also named as AS160, KIAA0603, may act as a GTPase-activating protein for RAB2A, RAB8A, RAB10 and RAB14. Isoform 2 promotes insulin-induced glucose transporter SLC2A4/GLUT4 translocation at the plasma membrane, thus increasing glucose uptake.

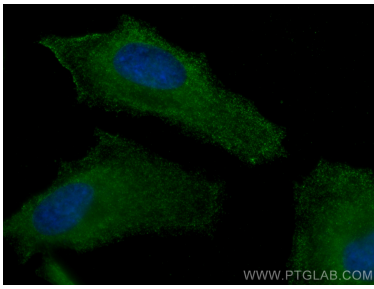
Storage

Storage:
Store at -20°C. Avoid exposure to light. Stable for one year after shipment.
Storage Buffer:
PBS with 50% Glycerol, 0.05% Proclin300, 0.5% BSA, pH 7.3.
Aliquoting is unnecessary for -20°C storage

For technical support and original validation data for this product please contact:
T: 1 (888) 4PTGLAB (1-888-478-4522) (toll free in USA), or 1(312) 455-8498 (outside USA)
E: proteintech@ptglab.com
W: ptglab.com

This product is exclusively available under Proteintech Group brand and is not available to purchase from any other manufacturer.

Selected Validation Data



Immunofluorescent analysis of (-20°C Methanol) fixed HeLa cells using CoraLite® Plus 488 TBC1D4 antibody (CL488-68063, Clone: 1E2H2) at dilution of 1:500.