

For Research Use Only

CoraLite® Plus 488-conjugated DPEP1 Monoclonal antibody

Catalog Number: CL488-68081



Basic Information

Catalog Number:

CL488-68081

Size:

100ul , Concentration: 1000 ug/ml by Nanodrop;

Source:

Mouse

Isotype:

IgG2a

Immunogen Catalog Number:

AG14591

GenBank Accession Number:

BC017023

GeneID (NCBI):

1800

UNIPROT ID:

P16444

Full Name:

dipeptidase 1 (renal)

Calculated MW:

411 aa, 46 kDa

Observed MW:

46 kDa

Purification Method:

Protein A purification

CloneNo.:

2B4F4

Recommended Dilutions:

IF-P 1:50-1:500

Excitation/Emission maxima wavelengths:

493 nm / 522 nm

Applications

Tested Applications:

IF-P

Species Specificity:

Human, Mouse, Rat, Pig

Positive Controls:

IF-P : mouse kidney tissue,

Storage

Storage:

Store at -20°C. Avoid exposure to light. Stable for one year after shipment.

Storage Buffer:

PBS with 50% Glycerol, 0.05% Proclin300, 0.5% BSA, pH 7.3.

Aliquoting is unnecessary for -20°C storage

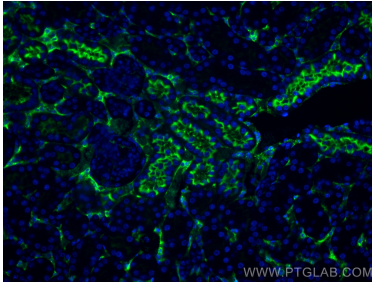
For technical support and original validation data for this product please contact:

T: 1 (888) 4PTGLAB (1-888-478-4522) (toll free in USA), or 1(312) 455-8498 (outside USA)

E: proteintech@ptglab.com
W: ptglab.com

This product is exclusively available under Proteintech Group brand and is not available to purchase from any other manufacturer.

Selected Validation Data



Immunofluorescent analysis of (4% PFA) fixed mouse kidney tissue using Coralite® Plus 488 DPEP1 antibody (CL488-68081, Clone: 2B4F4) at dilution of 1:200.