

For Research Use Only

CoraLite® Plus 488-conjugated SYNGR1 Monoclonal antibody

Catalog Number:CL488-68176



Basic Information

Catalog Number:

CL488-68176

Size:

100ul , Concentration: 1000 ug/ml by
Nanodrop;

Source:

Mouse

Isotype:

IgG1

Immunogen Catalog Number:

AG31309

GenBank Accession Number:

BC000731

GeneID (NCBI):

9145

UNIPROT ID:

O43759

Full Name:

synaptogyrin 1

Calculated MW:

25 kDa

Observed MW:

29 kDa

Purification Method:

Protein G purification

CloneNo.:

2H2H1

Recommended Dilutions:

IF-P 1:50-1:500

Excitation/Emission maxima
wavelengths:

493 nm / 522 nm

Applications

Tested Applications:

IF-P

Species Specificity:

Human, Mouse, Rat, Pig, Rabbit

Positive Controls:

IF-P : mouse brain tissue,

Storage

Storage:

Store at -20°C. Avoid exposure to light. Stable for one year after shipment.

Storage Buffer:

PBS with 50% Glycerol, 0.05% Proclin300, 0.5% BSA, pH 7.3.

Aliquoting is unnecessary for -20°C storage

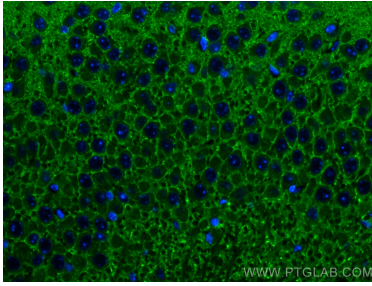
For technical support and original validation data for this product please contact:

T: 1 (888) 4PTGLAB (1-888-478-4522) (toll free
in USA), or 1(312) 455-8498 (outside USA)

E: proteintech@ptglab.com
W: ptglab.com

This product is exclusively available under Proteintech
Group brand and is not available to purchase from any
other manufacturer.

Selected Validation Data



Immunofluorescent analysis of (4% PFA) fixed mouse brain tissue using CoraLite® Plus 488 SYNGR1 antibody (CL488-68176, Clone: 2H2H1) at dilution of 1:200.