

For Research Use Only

# CoraLite® Plus 488-conjugated CAP1 Monoclonal antibody

Catalog Number: CL488-68207



## Basic Information

|  |  |   |
|--|--|---|
| <b>Catalog Number:</b><br>CL488-68207                          | <b>GenBank Accession Number:</b><br>BC013963                             | <b>Purification Method:</b><br>Protein G purification             |
| <b>Size:</b><br>100ul , Concentration: 1000 ug/ml by Nanodrop; | <b>GeneID (NCBI):</b><br>10487   | <b>CloneNo.:</b><br>2H3A10  |
| <b>Source:</b><br>Mouse  | <b>UNIPROT ID:</b><br>Q01518   | <b>Recommended Dilutions:</b><br>IF/ICC 1:50-1:500                |
| <b>Isotype:</b><br>IgG1  | <b>Full Name:</b><br>CAP, adenylate cyclase-associated protein 1 (yeast) | <b>Excitation/Emission maxima wavelengths:</b><br>493 nm / 522 nm |
| <b>Immunogen Catalog Number:</b><br>AG8876                     | <b>Calculated MW:</b><br>475 aa, 52 kDa                                  |   |
|  | <b>Observed MW:</b><br>52 kDa  |   |

## Applications

|   |  |
|---|--|
| <b>Tested Applications:</b><br>IF/ICC                         | <b>Positive Controls:</b><br>IF/ICC : HepG2 cells, |
| <b>Species Specificity:</b><br>Human, mouse, rat, pig, rabbit |  |

## Background Information

CAP1, also known as CAP, CAP1-PEN, belongs to the CAP family and contains 1 C-CAP/cofactor C-like domain. CAP1 binds to monomeric actin and regulates the actin cytoskeleton to control cell size, adhesion, and migration (PMID: 23737525). CAP1 also functions as a receptor for inflammatory cytokine resistin (PMID: 24606903). CAP1 is an abundant and ubiquitously expressed protein. Western blot analysis detected CAP1 at an apparent molecular mass of 52 kDa.

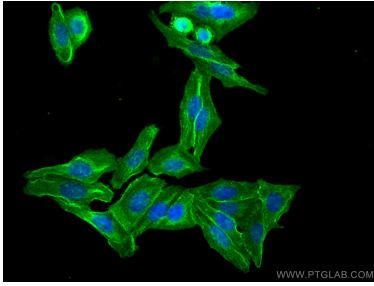
## Storage

**Storage:**  
Store at -20°C. Avoid exposure to light. Stable for one year after shipment.  
**Storage Buffer:**  
PBS with 50% Glycerol, 0.05% Proclin300, 0.5% BSA, pH 7.3.  
**Aliquoting is unnecessary for -20°C storage**

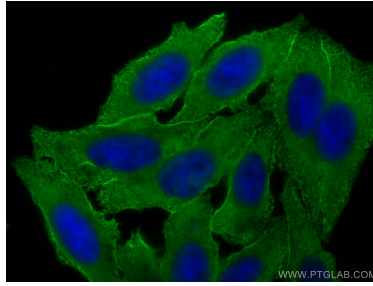
For technical support and original validation data for this product please contact:  
T: 1 (888) 4PTGLAB (1-888-478-4522) (toll free in USA), or 1(312) 455-8498 (outside USA)  
E: [proteintech@ptglab.com](mailto:proteintech@ptglab.com)  
W: [ptglab.com](http://ptglab.com)

This product is exclusively available under Proteintech Group brand and is not available to purchase from any other manufacturer.

## Selected Validation Data



Immunofluorescent analysis of (4% PFA) fixed HepG2 cells using CoraLite® Plus 488 CAP1 antibody (CL488-68207, Clone: 2H3A10) at dilution of 1:200.



Immunofluorescent analysis of (-20°C Ethanol) fixed HepG2 cells using CoraLite® Plus 488 CAP1 antibody (CL488-68207, Clone: 2H3A10) at dilution of 1:200.