

For Research Use Only

# CoraLite® Plus 488-conjugated Alpha smooth muscle actin specific Recombinant antibody

Catalog Number: CL488-80008

Featured Product



## Basic Information

Catalog Number:

CL488-80008

Size:

100ul , Concentration: 1000 ug/ml by 59 Nanodrop;

Source:

Rabbit

Isotype:

IgG

GenBank Accession Number:

NM\_001613

GeneID (NCBI):

59

UNIPROT ID:

P62736

Full Name:

actin, alpha 2, smooth muscle, aorta

Calculated MW:

42 kDa

Observed MW:

42 kDa

Purification Method:

Protein A purification

CloneNo.:

5H7

Recommended Dilutions:

IF-P 1:50-1:500

IF-Fro 1:50-1:500

IF/ICC 1:50-1:500

Excitation/Emission maxima wavelengths:

493 nm / 522 nm

## Applications

Tested Applications:

IF/ICC, IF-P, IF-Fro, FC (Intra)

Species Specificity:

human, mouse, rat, pig, chicken

Positive Controls:

IF-P : mouse heart tissue,

IF-Fro : mouse small intestine tissue,

IF/ICC : H9C2 cells,

## Background Information

ACTA2 (also known as  $\alpha$ -smooth muscle actin or  $\alpha$ -SMA) belongs to the actin family. Actins are highly conserved proteins that are involved in various types of cell motility and are ubiquitously expressed in all eukaryotic cells. ACTA2 is primarily expressed in vascular smooth muscle and anti-ACTA2 is commonly used to marker smooth muscle cells.

## Storage

Storage:

Store at -20°C. Avoid exposure to light. Stable for one year after shipment.

Storage Buffer:

PBS with 50% glycerol, 0.05% Proclin300, 0.5% BSA, pH7.3

Aliquoting is unnecessary for -20°C storage

For technical support and original validation data for this product please contact:

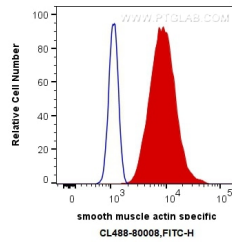
T: 1 (888) 4PTGLAB (1-888-478-4522) (toll free in USA), or 1(312) 455-8498 (outside USA)

E: [proteintech@ptglab.com](mailto:proteintech@ptglab.com)

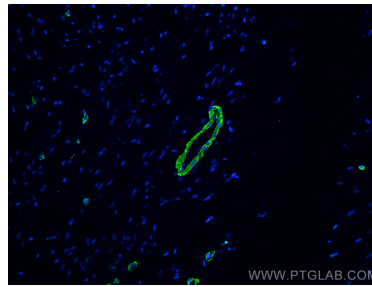
W: [ptglab.com](http://ptglab.com)

This product is exclusively available under Proteintech Group brand and is not available to purchase from any other manufacturer.

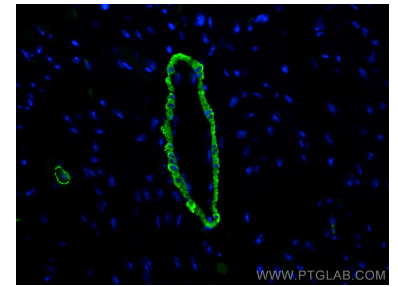
## Selected Validation Data



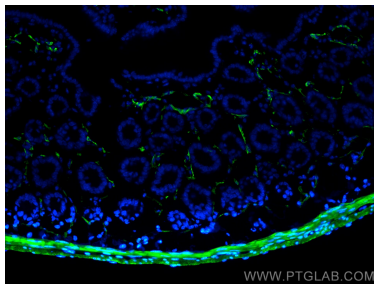
1X10<sup>6</sup> C2C12 cells were intracellularly stained with 0.4 ug CoraLite® Plus 488 Anti-Human smooth muscle actin specific (CL488-80008, Clone:5H7) (red), or 0.4 ug Control Antibody. Cells were fixed with 4% PFA and permeabilized with Flow Cytometry Perm Buffer (PF00011-C).



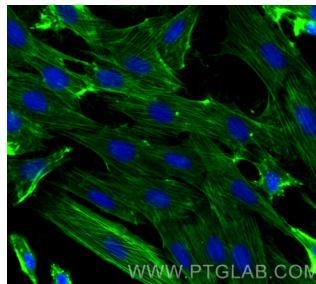
Immunofluorescent analysis of (4% PFA) fixed mouse heart tissue using CoraLite® Plus 488 smooth muscle actin specific antibody (CL488-80008, Clone: 5H7 ) at dilution of 1:200.



Immunofluorescent analysis of (4% PFA) fixed mouse heart tissue using CoraLite® Plus 488 smooth muscle actin specific antibody (CL488-80008, Clone: 5H7 ) at dilution of 1:200.



Immunofluorescent analysis of (4% PFA) fixed frozen OCT-embedded mouse small intestine tissue using CoraLite® Plus 488 Alpha smooth muscle actin specific antibody (CL488-80008, Clone: 5H7 ) at dilution of 1:200.



Immunofluorescent analysis of (-20°C Ethanol) fixed H9C2 cells using CoraLite® Plus 488 smooth muscle actin specific antibody (CL488-80008, Clone: 5H7 ) at dilution of 1:200.