

For Research Use Only

# CoraLite® Plus 488-conjugated EFHD2 Recombinant antibody

Catalog Number: CL488-83264-5



## Basic Information

<b>Catalog Number:</b> CL488-83264-5	<b>GenBank Accession Number:</b> BC023611	<b>Purification Method:</b> Protein A purification
<b>Size:</b> 100ul , Concentration: 1000 ug/ml by Nanodrop;	<b>GeneID (NCBI):</b> 79180	<b>CloneNo.:</b> 240185H5
<b>Source:</b> Rabbit	<b>UNIPROT ID:</b> Q96C19	<b>Recommended Dilutions:</b> IF/ICC 1:50-1:500
<b>Isotype:</b> IgG	<b>Full Name:</b> EF-hand domain family, member D2	<b>Excitation/Emission maxima wavelengths:</b> 493 nm / 522 nm
<b>Immunogen Catalog Number:</b> AG35084	<b>Calculated MW:</b> 27 kDa	
	<b>Observed MW:</b> 33 kDa	

## Applications

<b>Tested Applications:</b> IF/ICC	<b>Positive Controls:</b> IF/ICC : A431 cells,
<b>Species Specificity:</b> human	

## Background Information

EFHD2 also named Swiprosin-1, is a Ca<sup>2+</sup> binding actin protein. The expression of EFHD2 is upregulated during the activation of immune cells, epithelial and endothelial cells. The expression of EFHD2 is regulated by diverse signaling pathways that are contingent upon the specific type of cells. EFHD2 consists of 240 amino-acids. Based on the composition, the predicted molecular weight was reported to be 27 KDa while the apparent molecular weight was 33 KDa.

## Storage

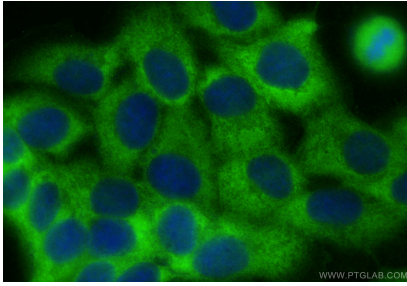
**Storage:**  
Store at -20°C. Avoid exposure to light. Stable for one year after shipment.  
**Storage Buffer:**  
PBS with 50% glycerol, 0.05% Proclin300, 0.5% BSA, pH7.3  
**Aliquoting is unnecessary for -20°C storage**

For technical support and original validation data for this product please contact:  
T: 1 (888) 4PTGLAB (1-888-478-4522) (toll free in USA), or 1(312) 455-8498 (outside USA)  
E: [proteintech@ptglab.com](mailto:proteintech@ptglab.com)  
W: [ptglab.com](http://ptglab.com)

This product is exclusively available under Proteintech Group brand and is not available to purchase from any other manufacturer.

---

## Selected Validation Data



Immunofluorescent analysis of (-20°C Methanol) fixed A431 cells using CoraLite® Plus 488 EFHD2 antibody (CL488-83264-5, Clone: 240185H5 ) at dilution of 1:200.