

For Research Use Only

CoraLite® Plus 488-conjugated BUB1B Recombinant antibody

Catalog Number: CL488-83920-6



Basic Information

Catalog Number:

CL488-83920-6

Size:

100ul , Concentration: 1000 ug/ml by Nanodrop;

Source:

Rabbit

Isotype:

IgG

Immunogen Catalog Number:

AG34182

GenBank Accession Number:

BC018739

GeneID (NCBI):

701

UNIPROT ID:

O60566

Full Name:

budding uninhibited by benzimidazoles 1 homolog beta (yeast)

Calculated MW:

1050 aa, 120 kDa

Observed MW:

130 kDa

Purification Method:

Protein A purification

CloneNo.:

240969F7

Recommended Dilutions:

IF/ICC 1:50-1:500

Excitation/Emission maxima wavelengths:

493 nm / 522 nm

Applications

Tested Applications:

IF/ICC

Species Specificity:

human, mouse

Positive Controls:

IF/ICC : HeLa cells,

Background Information

BUB1B(Mitotic checkpoint serine/threonine-protein kinase BUB1 beta), also named BUBR1, MAD3 and SSK1, belongs to the BUB1 subfamily. Human BUB1B is a 120 kDa protein that plays a central role in the spindle assembly checkpoint (SAC), the evolutionary conserved and self-regulatory system of higher organisms that monitors and repairs defects in chromosome segregation in mitotic cells(PMID:22201036). In addition to phosphorylation, BUB1B is subjected to posttranslational modifications including acetylation(PMID:22167194). Defects in BUB1B cause premature chromatid separation trait (PCS) and mosaic variegated aneuploidy syndrome type 1 (MVA1).

Storage

Storage:

Store at -20°C. Avoid exposure to light. Stable for one year after shipment.

Storage Buffer:

PBS with 50% glycerol, 0.05% Proclin300, 0.5% BSA, pH7.3

Aliquoting is unnecessary for -20°C storage

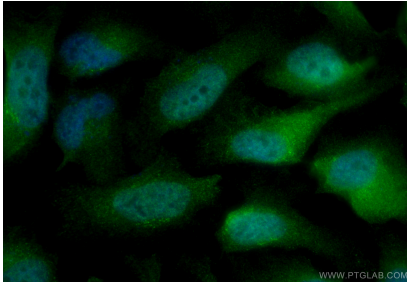
For technical support and original validation data for this product please contact:

T: 1 (888) 4PTGLAB (1-888-478-4522) (toll free in USA), or 1(312) 455-8498 (outside USA)

E: proteintech@ptglab.com
W: ptglab.com

This product is exclusively available under Proteintech Group brand and is not available to purchase from any other manufacturer.

Selected Validation Data



Immunofluorescent analysis of (4% PFA) fixed HeLa cells using Coralite® Plus 488 BUB1B antibody (CL488-83920-6, Clone: 240969F7) at dilution of 1:200.