

For Research Use Only



CoraLite® Plus 488-conjugated Clusterin Recombinant monoclonal antibody

Catalog Number: **CL488-84067-4**

Basic Information

Catalog Number: CL488-84067-4	GenBank Accession Number: BC010514	Purification Method: Protein A purification
Size: 100ul , Concentration: 1000 ug/ml by Nanodrop;	GeneID (NCBI): 1191	CloneNo.: 241277D4
Source: Rabbit	UNIPROT ID: P10909	Recommended Dilutions: IF/ICC: 1:50-1:500
Isotype: IgG	Full Name: clusterin	FC (Intra): 0.40 ug per 10 ⁶ cells in a 100 µl suspension
Immunogen Catalog Number: EG0225	Calculated MW: 449 aa, 53 kDa	Excitation/Emission maxima wavelengths: 493 nm / 522 nm
	Observed MW: 37 kDa	

Applications

Tested Applications: IF/ICC, FC (Intra)	Positive Controls:
Species Specificity: human	IF/ICC : HeLa cells, FC (Intra) : HeLa cells,

Background Information

Clusterin (Apolipoprotein J) is a 75-80 kDa heterodimeric glycoprotein produced by a wide array of tissues and found in most biologic fluids (PMID: 7648419; 11906815). It is encoded by one single gene and cleaved posttranslationally into α (34-36 kDa) and β (36-39 kDa) subunits prior to secretion from the cell. Many functions have been described for clusterin, including regulating apoptosis, transporting lipids, controlling cell interactions, regulating complement (PMID: 10694874).

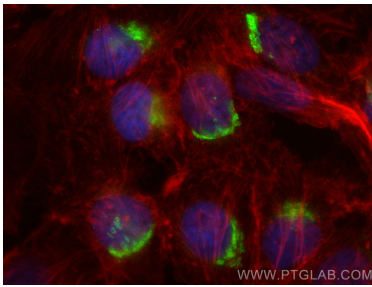
Storage

Storage:
Store at -20°C. Avoid exposure to light. Stable for one year after shipment.
Storage Buffer:
PBS with 50% glycerol, 0.05% Proclin300, 0.5% BSA, pH7.3
Aliquoting is unnecessary for -20°C storage

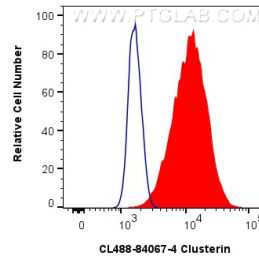
For technical support and original validation data for this product please contact:
T: 1 (888) 4PTGLAB (1-888-478-4522) (toll free in USA), or 1(312) 455-8498 (outside USA)
E: proteintech@ptglab.com
W: ptglab.com

This product is exclusively available under Proteintech Group brand and is not available to purchase from any other manufacturer.

Selected Validation Data



Immunofluorescent analysis of (4% PFA) fixed HeLa cells using Coralite® Plus 488 Clusterin antibody (CL488-84067-4, Clone: 241277D4) at dilution of 1:200, CL594-phalloidin (red).



1×10^6 HeLa cells were intracellularly stained with 0.4 μ g Coralite® Plus 488-conjugated Clusterin Recombinant antibody (CL488-84067-4, Clone:241277D4)(red), or 0.4 μ g Coralite® Plus 488 Rabbit IgG Isotype Control RecAb (CL488-98136, Clone: 240953C9) (blue). Cells were fixed with 4% PFA and permeabilized with Flow Cytometry Perm Buffer.