

For Research Use Only

CoraLite® Plus 555-conjugated MIF Polyclonal antibody



Catalog Number: CL555-20415

Featured Product

Basic Information

Catalog Number:

CL555-20415

Size:

100ul , Concentration: 1000 ug/mL by

Nanodrop;

Source:

Rabbit

Isotype:

IgG

Immunogen Catalog Number:

AG14058

GenBank Accession Number:

BC000447

GeneID (NCBI):

4282

UNIPROT ID:

P14174

Full Name:

macrophage migration inhibitory factor (glycosylation-inhibiting factor)

Calculated MW:

115 aa, 12 kDa

Observed MW:

12 kDa

Purification Method:

Antigen affinity purification

Excitation/Emission maxima wavelengths:

554 nm / 570 nm

Applications

Tested Applications:

FC (Intra)

Species Specificity:

human, rat, mouse

Background Information

MIF is a pleiotropic cytokine that contributes to the pathogenesis of many autoimmune diseases through its upstream immunoregulatory function and its polymorphic genetic locus. MIF is a highly conserved protein of 12.5 kDa, with evolutionarily ancient homologues in plants, protozoans, nematodes, and invertebrates.

Storage

Storage:

Store at -20°C. Avoid exposure to light. Stable for one year after shipment.

Storage Buffer:

PBS with 50% Glycerol, 0.05% Proclin300, 0.5% BSA, pH 7.3.

Aliquoting is unnecessary for -20°C storage

For technical support and original validation data for this product please contact:

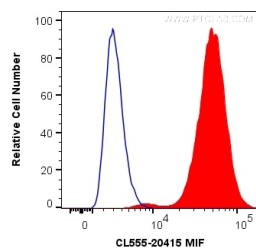
T: 1 (888) 4PTGLAB (1-888-478-4522) (toll free in USA), or 1(312) 455-8498 (outside USA)

E: proteintech@ptglab.com

W: ptglab.com

This product is exclusively available under Proteintech Group brand and is not available to purchase from any other manufacturer.

Selected Validation Data



1X10⁶ A549 cells were intracellularly stained with 0.2 ug Coralite® Plus 555 Anti-Human MIF (CL555-20415) (red), or 0.2 ug Coralite® Plus 555 Rabbit IgG Control Antibody (CL555-30000) (Blue). Cells were fixed with 4% PFA and permeabilized with Flow Cytometry Perm Buffer (PF00011-C).