

For Research Use Only

CoraLite®555-conjugated EPCAM/CD326 Polyclonal antibody

Catalog Number: CL555-21050

Featured Product



Basic Information

Catalog Number:

CL555-21050

Size:

100ul , Concentration: 1000 ug/ml by Nanodrop;

Source:

Rabbit

Isotype:

IgG

Immunogen Catalog Number:

AG15393

GenBank Accession Number:

BC014785

GeneID (NCBI):

4072

UNIPROT ID:

P16422

Full Name:

epithelial cell adhesion molecule

Calculated MW:

314 aa, 35 kDa

Observed MW:

35-40 kDa

Purification Method:

Antigen affinity purification

Recommended Dilutions:

IF/ICC: 1:50-1:500

FC: 0.40 ug per 10⁶ cells in a 100 µl suspension

Excitation/Emission maxima wavelengths:

557 nm / 570 nm

Applications

Tested Applications:

IF/ICC, FC

Species Specificity:

human, mouse

Positive Controls:

IF/ICC : HT-29 cells,

FC : HT-29 cells, MCF-7 cells

Background Information

Epithelial cell adhesion molecule (EpCAM, CD326) is a type I transmembrane glycoprotein that functions as a homophilic, epithelial-specific intercellular cell-adhesion molecule. In addition to cell adhesion, EpCAM is also involved in cellular signaling, cell migration, proliferation, and differentiation. EpCAM is highly expressed on most carcinomas and therefore of potential use as a diagnostic and prognostic marker for a variety of carcinomas, and has become a therapeutic target. EpCAM may occur in distinct forms due to glycosylation. (PMID: 20837599; 19249674; 21576002; 22647938; 12691820)

Storage

Storage:

Store at -20°C. Avoid exposure to light. Stable for one year after shipment.

Storage Buffer:

PBS with 50% glycerol, 0.05% Proclin300, 0.5% BSA, pH7.3

Aliquoting is unnecessary for -20°C storage

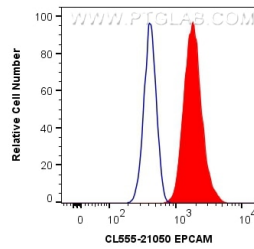
For technical support and original validation data for this product please contact:

T: 1 (888) 4PTGLAB (1-888-478-4522) (toll free in USA), or 1(312) 455-8498 (outside USA)

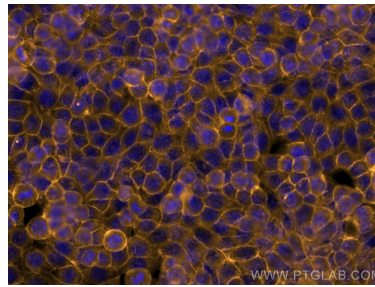
E: proteintech@ptglab.com
W: ptglab.com

This product is exclusively available under Proteintech Group brand and is not available to purchase from any other manufacturer.

Selected Validation Data



1x10⁶ HT-29 cells were surface stained with 0.4 ug Coralite®555-conjugated EPCAM/CD326 Polyclonal antibody (CL555-21050) (red), or 0.4 ug Control Antibody (blue). Cells were not fixed.



Immunofluorescent analysis of (-20°C Methanol) fixed HT-29 cells using Coralite®555 EPCAM/CD326 antibody (CL555-21050) at dilution of 1:200.