

For Research Use Only

# CoraLite®555-conjugated Beta Galactosidase Monoclonal antibody



Catalog Number:CL555-66586

## Basic Information

<b>Catalog Number:</b> CL555-66586	<b>GenBank Accession Number:</b> BC007493	<b>Purification Method:</b> Protein G purification
<b>Size:</b> 100ul , Concentration: 1000 µg/ml by Nanodrop;	<b>GeneID (NCBI):</b> 2720	<b>CloneNo.:</b> 4F4F4
<b>Source:</b> Mouse	<b>Full Name:</b> galactosidase, beta 1	<b>Recommended Dilutions:</b> IF 1:50-1:500
<b>Isotype:</b> IgG1	<b>Calculated MW:</b> 76 kDa	<b>Excitation/Emission maxima wavelengths:</b> 555 nm / 570 nm
<b>Immunogen Catalog Number:</b> AG8069	<b>Observed MW:</b> 64-66 kDa, 76-85 kDa	

## Applications

<b>Tested Applications:</b> IF	<b>Positive Controls:</b> IF : HepG2 cells,
<b>Species Specificity:</b> Human, mouse, rat	

## Background Information

GLB1(Beta-galactosidase) is also named as ELNR1 or Lactase. It cleaves beta-linked terminal galactosyl residues from gangliosides, glycoproteins, and glycosaminoglycans. This protein is identical to the elastin-binding protein (EBP), a major component of the nonintegrin cell surface receptor complex expressed in fibroblasts, smooth muscle cells, chondroblasts, leukocytes, and certain cancer cell types. Defects in GLB1 are the cause of GM1-gangliosidosis type 1 (GM1G1), GM1-gangliosidosis type 2 (GM1G2), GM1-gangliosidosis type 3 (GM1G3) and mucopolysaccharidosis type 4B (MPS4B). GLB1 is synthesized as an 85-kDa precursor that is C-terminally processed into a 64-66 kDa mature form and the released ~20-kDa proteolytic fragment was thought to be degraded (PMID: 10744681). GLB1 has 3 isoforms with MW of 76 kDa, 73 kDa and 61 kDa.

## Storage

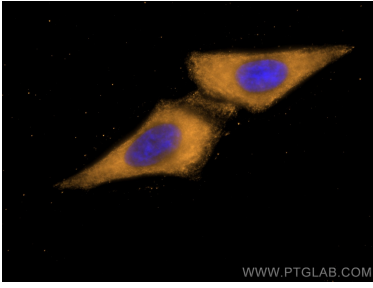
**Storage:**  
Store at -20°C. Avoid exposure to light.  
**Storage Buffer:**  
PBS with 50% Glycerol, 0.05% Proclin300, 0.5% BSA, pH 7.3.  
Aliquoting is unnecessary for -20°C storage

\*\*\* 20ul sizes contain 0.1% BSA

For technical support and original validation data for this product please contact:  
T: 1 (888) 4PTGLAB (1-888-478-4522) (toll free in USA), or 1(312) 455-8498 (outside USA)  
E: proteintech@ptglab.com  
W: ptglab.com

This product is exclusively available under Proteintech Group brand and is not available to purchase from any other manufacturer.

## Selected Validation Data



Immunofluorescent analysis of (-20°C Methanol) fixed HepG2 cells using CoraLite@555 Beta Galactosidase antibody (CL555-66586, Clone: 4F4F4) at dilution of 1:200.