

For Research Use Only

# CoraLite®594-conjugated IBA1 Polyclonal antibody

Catalog Number:CL594-10904

Featured Product

3 Publications



## Basic Information

Catalog Number:

CL594-10904

Size:

100ul , Concentration: 1000 ug/ml by 199  
Nanodrop;

Source:

Rabbit

Isotype:

IgG

Immunogen Catalog Number:

AG1363

GenBank Accession Number:

BC009474

GeneID (NCBI):

199

ENSEMBL Gene ID:

ENSG00000204472

UNIPROT ID:

P55008

Full Name:

allograft inflammatory factor 1

Calculated MW:

17 kDa

Purification Method:

Antigen affinity purification

Recommended Dilutions:

IF-P 1:50-1:500

IF/ICC 1:50-1:500

Excitation/Emission maxima  
wavelengths:

588 nm / 604 nm

## Applications

Tested Applications:

IF/ICC, IF-P

Species Specificity:

human, mouse, rat

Positive Controls:

IF-P : rat brain tissue,

IF/ICC : BV-2 cells,

## Background Information

IBA1 is a 143 amino acid cytoplasmic, inflammation response scaffold protein. It is constitutively expressed in monocytes and macrophages and is known to be involved in macrophage activation. It is a marker of activated macrophage. Expression of IBA1 is up-regulated in activated microglia following facial nerve axotomy, ischemia, and several brain diseases, thereby implicating it in the activated phenotypes of microglia.

## Storage

Storage:

Store at -20°C. Avoid exposure to light. Stable for one year after shipment.

Storage Buffer:

PBS with 50% glycerol, 0.05% Proclin300, 0.5% BSA, pH7.3

Aliquoting is unnecessary for -20°C storage

For technical support and original validation data for this product please contact:

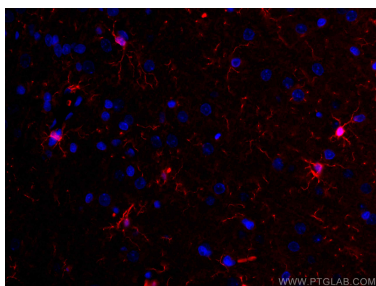
T: 1 (888) 4PTGLAB (1-888-478-4522) (toll free  
in USA), or 1(312) 455-8498 (outside USA)

E: [proteintech@ptglab.com](mailto:proteintech@ptglab.com)  
W: [ptglab.com](http://ptglab.com)

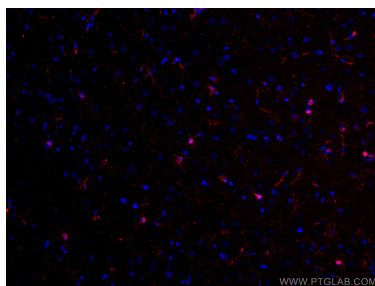
This product is exclusively available under Proteintech Group brand and is not available to purchase from any other manufacturer.



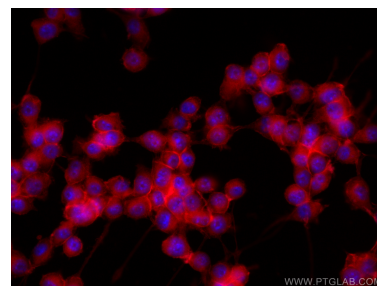
## Selected Validation Data



Immunofluorescent analysis of (4% PFA) fixed rat brain tissue using CoraLite®594 IBA1 antibody (CL594-10904) at dilution of 1:200.



Immunofluorescent analysis of (4% PFA) fixed rat brain tissue using CoraLite®594 IBA1 antibody (CL594-10904) at dilution of 1:200.



Immunofluorescent analysis of (-20°C Ethanol) fixed BV-2 cells using CoraLite®594 IBA1 antibody (CL594-10904) at dilution of 1:200.