

For Research Use Only

# CoraLite®594-conjugated Calbindin-D28k Polyclonal antibody



Catalog Number: ~~CL594-14479~~

Featured Product

## Basic Information

Catalog Number:  
CL594-14479

Size:  
100ul , Concentration: 1000 µg/ml by 793  
Nanodrop;

Source:  
Rabbit

Isotype:  
IgG

Immunogen Catalog Number:  
AG5861

GenBank Accession Number:  
BC006478

GeneID (NCBI):

793

Full Name:  
calbindin 1, 28kDa

Calculated MW:  
30 kDa

Purification Method:  
Antigen affinity purification

Recommended Dilutions:  
IF 1:50-1:500

Excitation/Emission maxima  
wavelengths:  
593 nm/614 nm

## Applications

Tested Applications:  
IF

Species Specificity:  
human, mouse, rat

Positive Controls:

IF : human kidney tissue,

## Background Information

Calbindin-D28k is a member of the calcium-binding protein superfamily that includes calmodulin and troponin C. It is a cytosolic calcium binding protein highly expressed in the distal tubule, intestines, central nervous system, primary murine osteoblast cells and in several other organs. It plays an important role in the intracellular calcium homeostasis, its strong buffering capacity prevents cytotoxic effect of high concentration of free calcium in kidney, brain, pancreas, and intestine.

## Storage

Storage:

Store at -20°C. Avoid exposure to light.

Storage Buffer:

PBS with 50% Glycerol, 0.05% Proclin300, 0.5% BSA, pH 7.3.

Aliquoting is unnecessary for -20°C storage

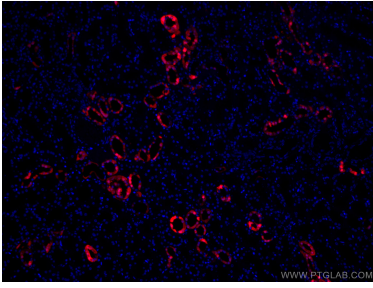
For technical support and original validation data for this product please contact:

T: 1 (888) 4PTGLAB (1-888-478-4522) (toll free  
in USA), or 1(312) 455-8498 (outside USA)

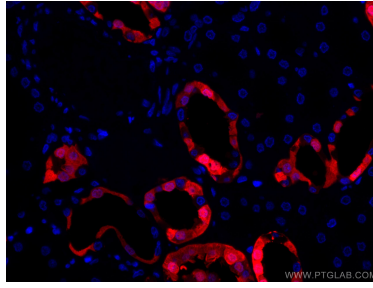
E: [proteintech@ptglab.com](mailto:proteintech@ptglab.com)  
W: [ptglab.com](http://ptglab.com)

This product is exclusively available under Proteintech Group brand and is not available to purchase from any other manufacturer.

## Selected Validation Data



Immunofluorescent analysis of (4% PFA) fixed human kidney tissue using CoraLite® 594 Calbindin-D28k antibody (CL594-14479) at dilution of 1:200.



Immunofluorescent analysis of (4% PFA) fixed human kidney tissue using CoraLite® 594 Calbindin-D28k antibody (CL594-14479) at dilution of 1:200.