

For Research Use Only

CoraLite®594-conjugated GFAP Polyclonal antibody

Catalog Number: CL594-16825

Featured Product



Basic Information

Catalog Number:

CL594-16825

Size:

100ul , Concentration: 1000 ug/ml by Nanodrop;

Source:

Rabbit

Isotype:

IgG

Immunogen Catalog Number:

AG10423

GenBank Accession Number:

BC013596

GeneID (NCBI):

2670

UNIPROT ID:

P14136

Full Name:

glial fibrillary acidic protein

Calculated MW:

432 aa, 50 kDa

Observed MW:

45-50 kDa

Purification Method:

Antigen affinity purification

Recommended Dilutions:

IF-P: 1:50-1:500

IF-Fro: 1:50-1:500

Excitation/Emission maxima wavelengths:

588 nm / 604 nm

Applications

Tested Applications:

IF-P, IF-Fro

Species Specificity:

human, mouse, rat

Positive Controls:

IF-P : rat brain tissue, mouse brain tissue, rat cerebellum tissue

IF-Fro : rat brain tissue,

Background Information

GFAP (Glial fibrillary acidic protein), an intermediate-filament (IF) protein, is specifically expressed in cells of astroglial lineage and is widely used to mark astroglia in the brain. It is also used as a marker for intracranial and intraspinal tumors arising from astrocytes.

Storage

Storage:

Store at -20°C. Avoid exposure to light. Stable for one year after shipment.

Storage Buffer:

PBS with 50% glycerol, 0.05% Proclin300, 0.5% BSA, pH7.3

Aliquoting is unnecessary for -20°C storage

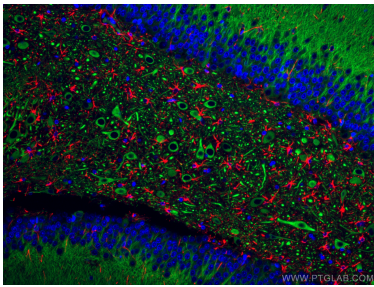
For technical support and original validation data for this product please contact:

T: 1 (888) 4PTGLAB (1-888-478-4522) (toll free in USA), or 1(312) 455-8498 (outside USA)

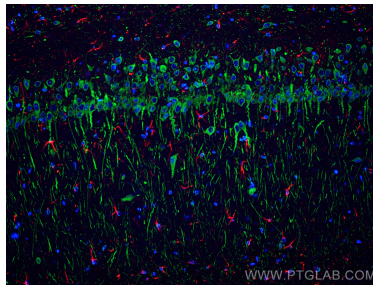
E: proteintech@ptglab.com
W: ptglab.com

This product is exclusively available under Proteintech Group brand and is not available to purchase from any other manufacturer.

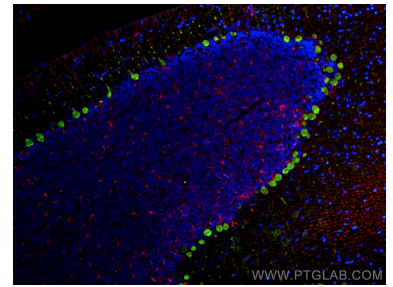
Selected Validation Data



Immunofluorescent analysis of (4% PFA) fixed rat brain tissue using CoraLite®594 GFAP antibody (CL594-16825) at dilution of 1:200, CoraLite®488 MAP2 antibody (CL488-17490, green). DAPI (blue).



Immunofluorescent analysis of (4% PFA) fixed paraffin-embedded rat brain tissue using CoraLite®594 GFAP antibody (CL594-16825) at dilution of 1:200, CoraLite® Plus 488 MAP2 antibody (CL488-17490, green). Heat mediated antigen retrieval with Tris-EDTA buffer (pH 9.0).



Immunofluorescent analysis of (4% PFA) fixed paraffin-embedded rat cerebellum tissue using CoraLite®594 GFAP antibody (CL594-16825) at dilution of 1:200, Calbindin-D28k antibody (14479-1-AP, green). Heat mediated antigen retrieval with Tris-EDTA buffer (pH 9.0).



Immunofluorescent analysis of (4% PFA) fixed frozen OCT-embedded rat brain tissue using CoraLite®594 GFAP antibody (CL594-16825) at dilution of 1:200, MAP2 antibody (67015-1-Ig, Clone: 1C3E6, green), TDP-43 antibody (10782-2-AP, Magenta).