

For Research Use Only

# CoraLite®594-conjugated ACE2 Polyclonal antibody



Catalog Number:CL594-21115

Featured Product

## Basic Information

**Catalog Number:**

CL594-21115

**Size:**

100ul , Concentration: 1000 µg/ml by Nanodrop;

**Source:**

Rabbit

**Isotype:**

IgG

**Immunogen Catalog Number:**

AG15455

**GenBank Accession Number:**

BC048094

**GeneID (NCBI):**

59272

**UNIPROT ID:**

Q9BYF1

**Full Name:**

angiotensin I converting enzyme (peptidyl-dipeptidase A) 2

**Calculated MW:**

805 aa, 92 kDa

**Observed MW:**

120 kDa, 92 kDa

**Purification Method:**

Antigen affinity purification

**Recommended Dilutions:**

IF 1:50-1:500

**Excitation/Emission maxima wavelengths:**

588 nm / 604 nm

## Applications

**Tested Applications:**

FC (Intra), IF

**Species Specificity:**

human, mouse, rat

**Positive Controls:**

IF : mouse kidney tissue,

## Background Information

ACE2 (Angiotensin-converting enzyme 2), also named as ACEH, is a zinc metalloprotease of the ACE family and a critical regulator of the reninangiotensin system. ACE2 has a more restricted tissue distribution than ACE, being found predominantly in the heart, kidneys, and testes although low levels have been detected in a variety of tissues (PMID:15983030). ACE2 has been shown to be a functional receptor of the human coronaviruses SARS-CoV and SARS-CoV-2 (PMID: 32142651). The expression level and expression pattern of human ACE2 in different tissues might be critical for the susceptibility, symptoms, and outcome of 2019-nCoV/SARS-CoV-2 infection (PMID: 32133153). It can be used as a potential therapeutic target of SARS-CoV-2 (PMID: 32125455). The calculated molecular weight of ACE2 is 92kDa but it migrates to 120kDa due to N-glycosylation (PMID:16166094). Sometimes, several cleaved fragments can also be detected as 75kDa, 50 kDa or 37kDa (PMID: 29561187, 22009550, 30759273). It has 2 isoforms produced by alternative splicing. This antibody is specific to ACE2. The location of ACE2 is membrane and cytoplasm, however it accumulates in the nucleus during the mitosis (PMID: 1730413/PMID: 18292088).

## Storage

**Storage:**

Store at -20°C. Avoid exposure to light. Stable for one year after shipment.

**Storage Buffer:**

PBS with 50% Glycerol, 0.05% Proclin300, 0.5% BSA, pH 7.3.

Aliquoting is unnecessary for -20°C storage

\*\*\* 20ul sizes contain 0.1% BSA

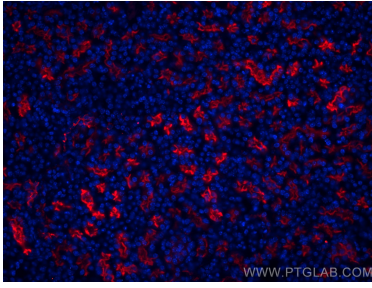
For technical support and original validation data for this product please contact:

T: 1 (888) 4PTGLAB (1-888-478-4522) (toll free in USA), or 1(312) 455-8498 (outside USA)

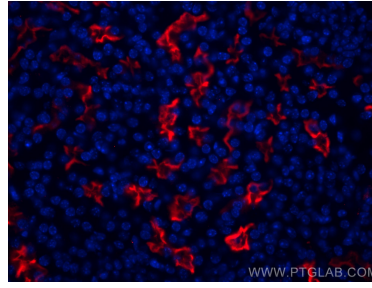
E: proteintech@ptglab.com  
W: ptglab.com

This product is exclusively available under Proteintech Group brand and is not available to purchase from any other manufacturer.

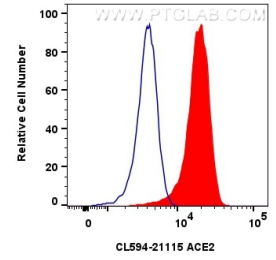
## Selected Validation Data



Immunofluorescent analysis of (4% PFA) fixed mouse kidney tissue using Coralite@594 ACE2 antibody (CL594-21115) at dilution of 1:200.



Immunofluorescent analysis of (4% PFA) fixed mouse kidney tissue using Coralite@594 ACE2 antibody (CL594-21115) at dilution of 1:200.



$1 \times 10^6$  HEK-293 cells were intracellularly stained with 0.8  $\mu$ g Coralite@594 Anti-Human ACE2 (CL594-21115)(red), or 0.8  $\mu$ g Coralite@594-conjugated Rabbit IgG control Rabbit PolyAb (CL594-30000) (blue). Cells were fixed with 4% PFA and permeabilized with Flow Cytometry Perm Buffer (PF00011-C).