

For Research Use Only

CoraLite®594-conjugated FSHR Polyclonal antibody



Catalog Number: CL594-22665 **3 Publications**

Basic Information

Catalog Number: CL594-22665
Size: 100ul , Concentration: 1000 µg/ml by Nanodrop and 1000 µg/ml by Bradford method using BSA as the standard;
Source: Rabbit
Isotype: IgG
Immunogen Catalog Number: AG18158

GenBank Accession Number: BC118548
GeneID (NCBI): 2492
Full Name: follicle stimulating hormone receptor
Calculated MW: 695 aa, 78 kDa
Observed MW: 71-78 kDa

Purification Method: Antigen affinity purification
Recommended Dilutions: IF 1:50-1:500
Excitation/Emission maxima wavelengths: 593 nm/614 nm

Applications

Tested Applications: IF
Cited Applications: IF, IHC
Species Specificity: human, mouse
Cited Species: duck

Positive Controls: IF : HeLa cells,

Background Information

Notable Publications

Author	Pubmed ID	Journal	Application
Jia Qi	33129993	Transl Res	IHC
Yu Zhang	34222406	Front Vet Sci	IF
Yu Zhang	34421865	Front Microbiol	IF

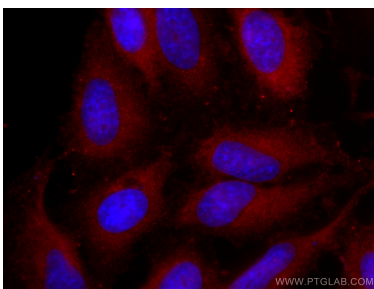
Storage

Storage: Store at -20°C. Avoid exposure to light.
Storage Buffer: PBS with 50% Glycerol, 0.05% Proclin300, 0.5% BSA, pH 7.3.
Aliquoting is unnecessary for -20°C storage

For technical support and original validation data for this product please contact:
T: 1 (888) 4PTGLAB (1-888-478-4522) (toll free in USA), or 1(312) 455-8498 (outside USA)
E: proteintech@ptglab.com
W: ptglab.com

This product is exclusively available under Proteintech Group brand and is not available to purchase from any other manufacturer.

Selected Validation Data



Immunofluorescent analysis of (-20°C Ethanol) fixed HeLa cells using CL594-22665 (FSHR antibody) at dilution of 1:100.