

For Research Use Only

CoraLite®594-conjugated smooth muscle actin-specific Polyclonal antibody



Catalog Number: **CL594-55135**

Basic Information

Catalog Number: CL594-55135	GenBank Accession Number: NM_001613	Purification Method: Antigen affinity purification
Size: 100ul , Concentration: 1000 µg/ml by Nanodrop;	GeneID (NCBI): 59	Recommended Dilutions: IF 1:50-1:500
Source: Rabbit	Full Name: actin, alpha 2, smooth muscle, aorta	Excitation/Emission maxima wavelengths: 593 nm/614 nm
Isotype: IgG	Calculated MW: 42 kDa	
	Observed MW: 42 kDa	

Applications

Tested Applications:
IF

Species Specificity:
human, mouse, rat

Positive Controls:

IF : mouse heart tissue,

Background Information

ACTA2, also named as a-SMA,AAT6;ACTSA belongs to the actin family. Actins are highly conserved proteins that are involved in various types of cell motility and are ubiquitously expressed in all eukaryotic cells. Defects in ACTA2 are the cause of aortic aneurysm familial thoracic type 6 (AAT6). The immunogen of this antibody is a specific domain of ACTA2. This antibody stains the aorta only.

Storage

Storage:

Store at -20°C. Avoid exposure to light.

Storage Buffer:

PBS with 50% Glycerol, 0.05% Proclin300, 0.5% BSA, pH 7.3.

Aliquoting is unnecessary for -20°C storage

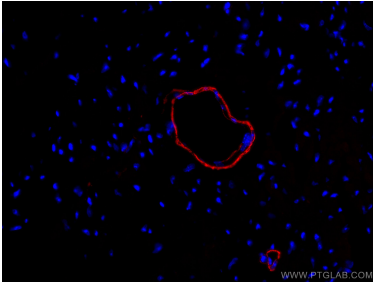
For technical support and original validation data for this product please contact:

T: 1 (888) 4PTGLAB (1-888-478-4522) (toll free
in USA), or 1(312) 455-8498 (outside USA)

E: proteintech@ptglab.com
W: ptglab.com

This product is exclusively available under Proteintech Group brand and is not available to purchase from any other manufacturer.

Selected Validation Data



Immunofluorescent analysis of (4% PFA) fixed mouse heart tissue using CoraLite®594 smooth muscle actin-specific antibody (CL594-55135) at dilution of 1:200.