

# CoraLite594-conjugated beta Actin Monoclonal ANTIBODY

Catalog Number: CL594-60008

## Basic Information

<b>Catalog Number:</b> CL594-60008	<b>GenBank Accession Number:</b> BC002409	<b>Recommended Dilutions:</b> IF 1:50-1:500
<b>Size:</b> 100 µg/ 100 µl	<b>GeneID (NCBI):</b> 60	<b>Excitation/Emission maxima wavelengths:</b> 593 nm/614 nm
<b>Source:</b> Mouse	<b>Full Name:</b> actin, beta	
<b>Isotype:</b> IgM	<b>Calculated MW:</b> 375aa, 42 kDa	
<b>Purification Method:</b> Caprylic acid/ammonium sulfate precipitation	<b>Observed MW:</b>	
<b>Immunogen Catalog Number:</b> AG0297		

## Applications

<b>Tested Applications:</b> IF, ELISA	<b>Positive Controls:</b> IF : HepG2 cells;
<b>Species Specificity:</b> human, mouse, rat, pig, yeast, plant, Zebrafish	

## Background Information

Beta actin, also named as ACTB and F-Actin, belongs to the actin family. Actins are highly conserved globular proteins that are involved in various types of cell motility and are ubiquitously expressed in all eukaryotic cells. At least six isoforms of actins are known in mammals and other vertebrates: alpha (ACTC1, cardiac muscle 1), alpha 1 (ACTA1, skeletal muscle) and 2 (ACTA2, aortic smooth muscle), beta (ACTB), gamma 1 (ACTG1) and 2 (ACTG2, enteric smooth muscle). Beta and gamma 1 are two non-muscle actin proteins. Most actins consist of 376aa, while ACTG2 (rich in muscles) has 375aa and ACTG1 (found in non-muscle cells) has only 374aa. Beta actin has been widely used as the internal control in RT-PCR and Western Blotting as a 42-kDa protein. However, the 37-40 kDa cleaved fragment of beta actin can be generated during apoptosis process. This antibody is conjugated with CL594, Ex/Em 593 nm/614 nm.

## Notable Publications

Author	Pubmed ID	Journal	Application
--------	-----------	---------	-------------

## Storage

**Storage:**  
Store at -20°C. Stable for one year after shipment.  
**Storage Buffer:**  
PBS with 50% Glycerol, 0.05% Proclin300, 0.5% BSA, pH 7.3.  
Aliquoting is unnecessary for -20°C storage

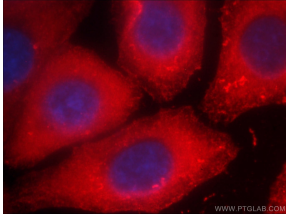
For technical support and original validation data for this product please contact:

T: 1 (888) 4PTGLAB (1-888-478-4522) (toll free in USA), or 1(312) 455-8498 (outside USA)

E: [proteintech@ptglab.com](mailto:proteintech@ptglab.com)  
W: [ptglab.com](http://ptglab.com)

This product is exclusively available under Proteintech Group brand and is not available to purchase from any other manufacturer.

## Selected Validation Data



Immunofluorescent analysis of (-20°C Ethanol) fixed HepG2 cells using CL594-60008 (beta Actin antibody) at dilution of 1:100.