

For Research Use Only

CoraLite®594-conjugated CD44 Monoclonal antibody

Catalog Number:CL594-60224

Featured Product



Basic Information

Catalog Number:

CL594-60224

Size:

100ul , Concentration: 1000 ug/ml by Nanodrop;

Source:

Mouse

Isotype:

IgG2a

Immunogen Catalog Number:

AG7633

GenBank Accession Number:

BC004372

GeneID (NCBI):

960

ENSEMBL Gene ID:

ENSG00000026508

UNIPROT ID:

P16070

Full Name:

CD44 molecule (Indian blood group)

Calculated MW:

742 aa, 82 kDa

Purification Method:

Protein A purification

CloneNo.:

6F4H2

Recommended Dilutions:

IF-P 1:50-1:500

Excitation/Emission maxima wavelengths:

588 nm / 604 nm

Applications

Tested Applications:

IF-P

Species Specificity:

human, pig

Positive Controls:

IF-P : human lung cancer tissue,

Background Information

CD44 is a type I transmembrane glycoprotein that mediates cell-cell and cell-matrix interactions through its affinity for hyaluronic acid (HA) and possibly also through its affinity for other ligands. Adhesion with HA plays an important role in cell migration, tumor growth and progression. CD44 is also involved in lymphocyte activation, recirculation and homing, and in hematopoiesis. This protein exists in multiple forms (with molecular weight ranging from 16 kDa to over 200 kDa) generated by alternative RNA splicing and extensive post-translational modifications. The antibody is conjugated with CL594, Ex/Em 593 nm/614 nm.

Storage

Storage:

Store at -20°C. Avoid exposure to light. Stable for one year after shipment.

Storage Buffer:

PBS with 50% Glycerol, 0.05% Proclin300, 0.5% BSA, pH 7.3.

Aliquoting is unnecessary for -20°C storage

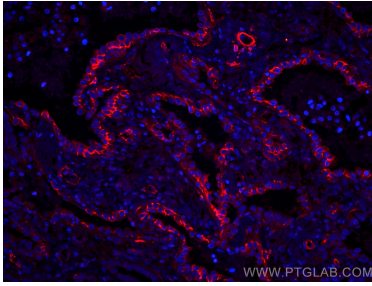
For technical support and original validation data for this product please contact:

T: 1 (888) 4PTGLAB (1-888-478-4522) (toll free in USA), or 1(312) 455-8498 (outside USA)

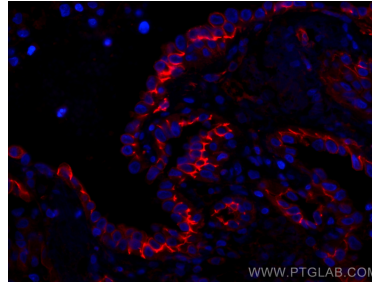
E: proteintech@ptglab.com
W: ptglab.com

This product is exclusively available under Proteintech Group brand and is not available to purchase from any other manufacturer.

Selected Validation Data



Immunofluorescent analysis of (4% PFA) fixed human lung cancer tissue using CoraLite®594 CD44 antibody (CL594-60224, Clone: 6F4H2) at dilution of 1:200.



Immunofluorescent analysis of (4% PFA) fixed human lung cancer tissue using CoraLite®594 CD44 antibody (CL594-60224, Clone: 6F4H2) at dilution of 1:200.