

For Research Use Only

CoraLite®594-conjugated Myosin Light Chain 2 Monoclonal antibody



Catalog Number: **CL594-60229**

Basic Information

Catalog Number: CL594-60229	GenBank Accession Number: BC015821	Purification Method: Protein G purification
Size: 100UL, Concentration: 1000 µg/ml by 4633 Bradford method using BSA as the standard;	GeneID (NCBI): 4633	CloneNo.: 5A1F1
Source: Mouse	Full Name: myosin, light chain 2, regulatory, cardiac, slow	Recommended Dilutions: IF 1:50-1:500
Isotype: IgG1	Calculated MW: 19 kDa	Excitation/Emission maxima wavelengths: 593 nm/614 nm
Immunogen Catalog Number: AG1356	Observed MW: 18 kDa	

Applications

Tested Applications: IF, ELISA	Positive Controls: IF : C2C12 cells,
Species Specificity: human, mouse, rat, pig	

Background Information

MYL2, also named as MLC-2v and MLC-2, is ventricular/cardiac muscle isoform. Defects in MYL2 are the cause of cardiomyopathy familial hypertrophic type 10 (CMH10). Defects in MYL2 are the cause of cardiomyopathy familial hypertrophic with mid-left ventricular chamber type 2 (MVC2). MYL2 has been widely used as a marker of mature ventricular cardiomyocytes.

Storage

Storage:
Store at -20°C. Avoid exposure to light. Stable for one year after shipment.
Storage Buffer:
PBS with 0.02% sodium azide and 50% glycerol pH 7.3.
Aliquoting is unnecessary for -20°C storage

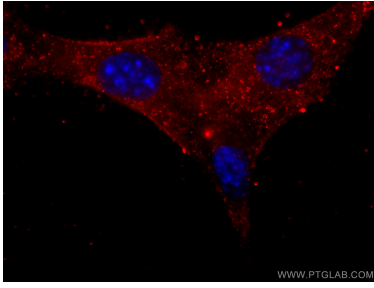
For technical support and original validation data for this product please contact:

T: 1 (888) 4PTGLAB (1-888-478-4522) (toll free
in USA), or 1(312) 455-8498 (outside USA)

E: proteintech@ptglab.com
W: ptglab.com

This product is exclusively available under Proteintech Group brand and is not available to purchase from any other manufacturer.

Selected Validation Data



Immunofluorescent analysis of (-20°C Ethanol) fixed C2C12 cells using CL594-60229 (Myosin Light Chain 2 antibody) at dilution of 1:50 .