

For Research Use Only



CoraLite®594-conjugated PKM2-specific Monoclonal antibody

Catalog Number: **CL594-60268**

Featured Product

Basic Information

Catalog Number:

CL594-60268

Size:

100UL, Concentration: 2000 µg/ml by 5315

Bradford method using BSA as the standard;

Source:

Mouse

Isotype:

IgG1

GenBank Accession Number:

NM_002654

GeneID (NCBI):

5315

Full Name:

PKM pyruvate kinase, muscle

Calculated MW:

58 kDa

Observed MW:

58 kDa

Purification Method:

Protein G purification

CloneNo.:

1C11C7

Recommended Dilutions:

IF 1:50-1:500

Excitation/Emission maxima wavelengths:

593 nm/614 nm

Applications

Tested Applications:

IF, ELISA

Species Specificity:

human, mouse, rat

Positive Controls:

IF : HepG2 cells,

Background Information

PKM, also named as OIP3, PK2, PK3, PKM, p58, THBP1, CTHBP and Tumor M2-PK, belongs to the pyruvate kinase family. It is glycolytic enzyme that catalyzes the transfer of a phosphoryl group from phosphoenolpyruvate (PEP) to ADP, generating ATP. It stimulates POU5F1-mediated transcriptional activation. PKM plays a general role in caspase independent cell death of tumor cells. PKM has 2 isoforms named as PKM1/M2. The activity of the M2 isoform can be inhibited by tyrosine kinase signalling in tumour cells. The primary pyruvate kinase isoform before tumour development is PK-M1; however, the primary isoform from four independent tumours is PK-M2 (PMID:18337823). The immunogen of this antibody is M2 isoform and this antibody is specific to PKM2 isoform.

Storage

Storage:

Store at -20°C. Avoid exposure to light. Stable for one year after shipment.

Storage Buffer:

PBS with 50% Glycerol, 0.05% Proclin300, 0.5% BSA, pH 7.3.

Aliquoting is unnecessary for -20°C storage

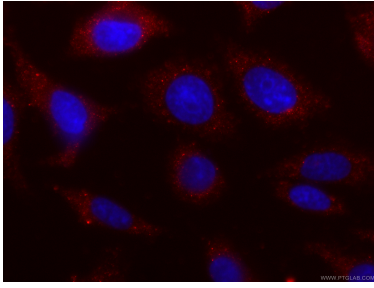
For technical support and original validation data for this product please contact:

T: 1 (888) 4PTGLAB (1-888-478-4522) (toll free in USA), or 1(312) 455-8498 (outside USA)

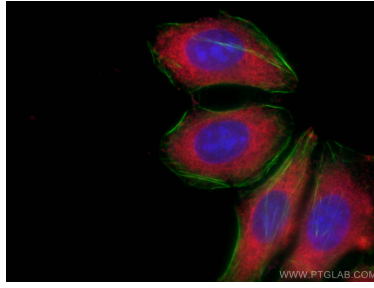
E: proteintech@ptglab.com
W: ptglab.com

This product is exclusively available under Proteintech Group brand and is not available to purchase from any other manufacturer.

Selected Validation Data



Immunofluorescent analysis of (-20°C Ethanol) fixed HepG2 cells using CL594-60268 (PKM2-specific antibody) at dilution of 1:100.



Immunofluorescent analysis of (-20°C Ethanol) fixed HepG2 cells using CoraLite®594-conjugated PKM2-specific antibody (CL594-60268, Clone: 1C11C7) at dilution of 1:600.