

For Research Use Only

CoraLite®594 Anti-Mouse FcεR1α (MAR-1)

Catalog Number: CL594-65091



Basic Information

Catalog Number:

CL594-65091

Size:

100ug, 500 µg/ml

Source:

Armenian Hamster

Isotype:

IgG

GenBank Accession Number:

BC125455

GeneID (NCBI):

14125

Full Name:

Fc receptor, IgE, high affinity I, alpha polypeptide

Purification Method:

Affinity purification

CloneNo.:

MAR-1

Recommended Dilutions:

FC: 0.5 ug per 10⁶ cells in 100 µl suspension

Excitation/Emission maxima wavelengths:

588 nm / 604 nm

Applications

Tested Applications:

FC

Species Specificity:

mouse

Positive Controls:

FC : MC/9 cells,

Background Information

Fc epsilon Receptor I alpha (FcεR1α) is a single-pass type I membrane protein that contains 2 immunoglobulin-like domains. FcεR1α forms a tetrameric complex, FcεRI, with one beta and two gamma subunits (PMID: 19406478). FcεRI is the high-affinity receptor for the Fc region of immunoglobulin E (IgE) (PMID: 1532373). It is expressed on mast cells and basophils and plays a central role in the allergic response (PMID: 2148316).

Storage

Storage:

Store at 2-8°C. Avoid exposure to light. Stable for one year after shipment.

Storage Buffer:

PBS with 0.09% sodium azide, pH7.3

For technical support and original validation data for this product please contact:

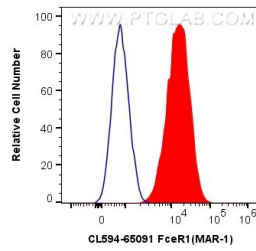
T: 1 (888) 4PTGLAB (1-888-478-4522) (toll free in USA), or 1(312) 455-8498 (outside USA)

E: proteintech@ptglab.com

W: ptglab.com

This product is exclusively available under Proteintech Group brand and is not available to purchase from any other manufacturer.

Selected Validation Data



1X10⁶ MC/9 cells were surface stained with 0.5 ug CoraLite®594 Anti-Mouse FcεR1 (CL594-65091, Clone:MAR-1) (red), or 0.5 ug Isotype Control. Cells were not fixed.