

For Research Use Only

CoraLite®594 Anti-Mouse CD44 (IM7)

Catalog Number:CL594-65117



Basic Information

Catalog Number:

CL594-65117

Size:

100ug , 0.5 mg/ml

Source:

Rat

Isotype:

IgG2b, kappa

GenBank Accession Number:

BC051388

GeneID (NCBI):

12505

UNIPROT ID:

P15379

Full Name:

CD44 antigen

Purification Method:

Affinity purification

CloneNo.:

IM7

Recommended Dilutions:

FC: 0.5 ug per 10⁶ cells in 100 µl suspension

Excitation/Emission maxima wavelengths:

588 nm / 604 nm

Applications

Tested Applications:

FC

Species Specificity:

Mouse

Positive Controls:

FC : mouse splenocytes,

Background Information

CD44 is a type I transmembrane glycoprotein expressed on embryonic stem cells and in various levels on other cell types including connective tissues and bone marrow. CD44 expression is also upregulated in subpopulations of cancer cells and is recognized as a molecular marker for cancer stem cells (PMID: 29747682). It is a cell-surface receptor that mediates cell-cell and cell-matrix interactions through its affinity for hyaluronic acid (HA) and possibly also through its affinity for other ligands (PMID: 10694938). Adhesion with HA plays an important role in cell migration, tumor growth and progression. CD44 is also involved in lymphocyte activation, recirculation and homing, and in hematopoiesis.

Storage

Storage:

Store at 2-8°C. Avoid exposure to light. Stable for one year after shipment.

Storage Buffer:

PBS with 0.09% sodium azide and 0.5% BSA, pH7.3

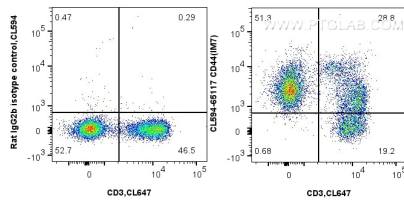
For technical support and original validation data for this product please contact:

T: 1 (888) 4PTGLAB (1-888-478-4522) (toll free in USA), or 1(312) 455-8498 (outside USA)

E: proteintech@ptglab.com
W: ptglab.com

This product is exclusively available under Proteintech Group brand and is not available to purchase from any other manufacturer.

Selected Validation Data



1X10⁶ mouse splenocytes were surface co-stained with Coralite® Plus 647 Anti-Mouse CD3 (17A2) and 0.5 ug Coralite®594 Anti-Mouse CD44 (CL594-65117, Clone: IM7) or 0.5 ug Coralite®594 Rat IgG2b Isotype Control (LTF-2) (CL594-65211, Clone: LTF-2). Cells were not fixed.