

For Research Use Only

CoraLite®594 Anti-Rat CD8a (OX-8)

Catalog Number:CL594-65180



Basic Information

Catalog Number:

CL594-65180

Size:

100ug, 0.5 mg/ml

Source:

Mouse

Isotype:

IgG1, kappa

GenBank Accession Number:

BC088126

GeneID (NCBI):

24930

UNIPROT ID:

P07725

Full Name:

CD8a molecule

Purification Method:

Purified by protein-A affinity chromatography

CloneNo.:

OX-8

Recommended Dilutions:

FC: 0.5 ug per 10⁶ cells in 100 µl suspension

Excitation/Emission maxima wavelengths:

588 nm / 604 nm

Applications

Tested Applications:

FC

Species Specificity:

Rat

Positive Controls:

FC : rat splenocytes,

Background Information

CD8 is a transmembrane glycoprotein composed of two disulfide-linked chains. It can be present as a homodimer of CD8a or as a heterodimer of CD8a and CD8β (PMID: 3264320; 8253791). CD8 is found on most thymocytes. The majority of class I-restricted T cells express mostly the CD8aβ heterodimer while CD8aa homodimers alone have been found on some gut intraepithelial T cells, on some T cell receptor (TCR) γδ T cells and on NK cells (PMID: 2111591; 1831127; 8420975). CD8 acts as a co-receptor that binds to MHC class-I and participates in cytotoxic T cell activation (PMID: 8499079). During T cell development, CD8 is required for positive selection of CD4-/CD8+ T cells (PMID: 1968084).

Storage

Storage:

Store at 2-8°C. Avoid exposure to light. Stable for one year after shipment.

Storage Buffer:

PBS with 0.09% sodium azide, pH7.3

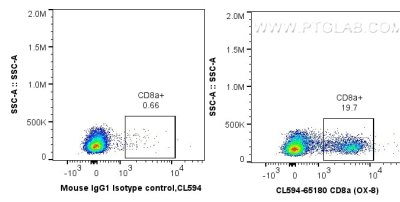
For technical support and original validation data for this product please contact:

T: 1 (888) 4PTGLAB (1-888-478-4522) (toll free in USA), or 1(312) 455-8498 (outside USA)

E: proteintech@ptglab.com
W: ptglab.com

This product is exclusively available under Proteintech Group brand and is not available to purchase from any other manufacturer.

Selected Validation Data



1X10⁶ rat splenocytes were surface stained with 0.5 ug CoraLite®594 Anti-Rat CD8a (CL594-65180, Clone: OX-8) or 0.5 ug Isotype Control. Cells were not fixed.