

For Research Use Only

CoraLite®594-conjugated Bcl-XL Monoclonal antibody



Catalog Number:CL594-66020

Basic Information

Catalog Number:

CL594-66020

Size:

100UL, Concentration: 2000 µg/ml by 598
Bradford method using BSA as the
standard;

Source:

Mouse

Isotype:

IgG2b

Immunogen Catalog Number:

AG18037

GenBank Accession Number:

BC019307

GeneID (NCBI):

598

Full Name:

BCL2-like 1

Calculated MW:

26 kDa

Purification Method:

Protein A purification

CloneNo.:

4C12A6

Recommended Dilutions:

IF 1:50-1:500

Excitation/Emission maxima
wavelengths:

593 nm/614 nm

Applications

Tested Applications:

FC, IF

Species Specificity:

human

Positive Controls:

IF : HeLa cells, MDCK cells

Background Information

BCL2L1 is a member of the BCL-2 protein family. BCL2L1 is expressed as three isoforms, Bcl-X(L), Bcl-X(s) and Bcl-X(beta), and is located at the outer mitochondrial membrane. The Bcl-XL isoform is a 233 amino acid protein, acting as an apoptotic inhibitor. Bcl-XL can form heterodimers with BAX, BAK or BCL2, and the heterodimerization with BAX does not seem to be required for anti-apoptotic activity. The Bcl-XS isoform is a shorter variant that is 178 amino acids in length and lacks a 63 amino acid region (amino acids 126-188), acting as an apoptotic activator.

Storage

Storage:

Store at -20°C. Avoid exposure to light. Stable for one year after shipment.

Storage Buffer:

PBS with 50% Glycerol, 0.05% Proclin300, 0.5% BSA, pH 7.3.

Aliquoting is unnecessary for -20°C storage

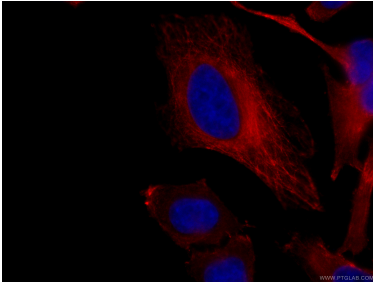
For technical support and original validation data for this product please contact:

T: 1 (888) 4PTGLAB (1-888-478-4522) (toll free
in USA), or 1(312) 455-8498 (outside USA)

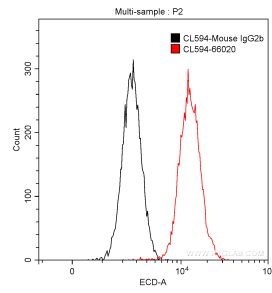
E: proteintech@ptglab.com
W: ptglab.com

This product is exclusively available under Proteintech Group brand and is not available to purchase from any other manufacturer.

Selected Validation Data



Immunofluorescent analysis of (4% PFA) fixed HeLa cells using CL594-66020 (Bcl-XL antibody) at dilution of 1:100.



1X10⁶ HeLa cells were intracellularly stained with 0.5 ug CoraLite®594 Anti-Human Bcl-XL (CL594-66020, Clone:4C12A6) (red), and 0.5 ug Control Antibody. Cells were fixed and permeabilized with True-Nuclear Transcription Factor Buffer Set.