

For Research Use Only

CoraLite594-conjugated alpha Tubulin Monoclonal ANTIBODY



Catalog Number: CL594-66031

Basic Information

Catalog Number:
CL594-66031

Size:
100 µg/ 100 µl

Source:
Mouse

Isotype:
IgG2b

Purification Method:
Protein A purification

Immunogen Catalog Number:
AG18034

GenBank Accession Number:
BC009314

GeneID (NCBI):
10376

Full Name:
tubulin, alpha 1b

Calculated MW:
50 kDa

Observed MW:

Recommended Dilutions:
IF 1:50-1:500

Excitation/Emission maxima wavelengths:
593 nm/614 nm

Applications

Tested Applications:
FC, IF, ELISA

Species Specificity:
human,mouse,rat,dog

Positive Controls:

IF : HepG2 cells;

Background Information

There are five tubulins in human cells: alpha, beta, gamma, delta, and epsilon. Tubulins are conserved across species. They form heterodimers, which multimerize to form a microtubule filament. An alpha and beta tubulin heterodimer is the basic structural unit of microtubules. The heterodimer does not come apart once formed. The alpha and beta tubulins, which are each about 55 kDa MW, are homologous but not identical. Alpha tubulin is useful for scientists across fields as an internal control due to its high, ubiquitous expression pattern. Tubulin expression may vary according to resistance to antimicrobial and antimitotic drugs. This antibody is CL594(Ex/Em 593 nm/614 nm) conjugated.

Notable Publications

Author	Pubmed ID	Journal	Application
--------	-----------	---------	-------------

Storage

Storage:

Store at -20°C. Stable for one year after shipment.

Storage Buffer:

PBS with 50% Glycerol, 0.05% Proclin300, 0.5% BSA, pH 7.3.

Aliquoting is unnecessary for -20°C storage

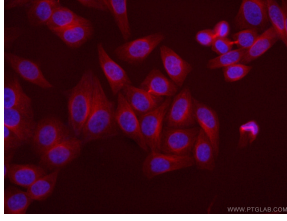
For technical support and original validation data for this product please contact:

T: 1 (888) 4PTGLAB (1-888-478-4522) (toll free in USA), or 1(312) 455-8498 (outside USA)

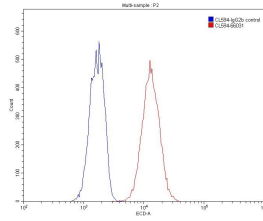
E: proteintech@ptglab.com
W: ptglab.com

This product is exclusively available under Proteintech Group brand and is not available to purchase from any other manufacturer.

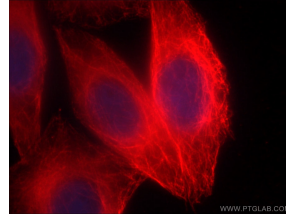
Selected Validation Data



Immunofluorescent analysis of (-20°C Ethanol) fixed HepG2 cells using CL594-66031 (alpha Tubulin antibody) at dilution of 1:50 and N/A



1x10⁶ HepG2 cells were stained with 0.20ug alpha Tubulin antibody (CL594-66031, red) and control antibody (blue). Fixed with 90% MeOH



Immunofluorescent analysis of (-20°C Ethanol) fixed HepG2 cells using CL594-66031 (alpha Tubulin antibody) at dilution of 1:100.