

For Research Use Only

# CoraLite594-conjugated Lamin B1 Monoclonal ANTIBODY



Catalog Number: CL594-66095

## Basic Information

Catalog Number:  
CL594-66095

Size:  
100 µg/ 100 µl

Source:  
Mouse

Isotype:  
IgG1

Purification Method:  
Protein G purification

Immunogen Catalog Number:  
AG20522

GenBank Accession Number:  
BC012295

GeneID (NCBI):  
4001

Full Name:  
lamin B1

Calculated MW:  
66 kDa

Observed MW:

Recommended Dilutions:  
IF 1:50-1:500

Excitation/Emission maxima wavelengths:  
593 nm/614 nm

## Applications

Tested Applications:  
IF, ELISA

Species Specificity:  
human,mouse,rat

Positive Controls:

IF : HepG2 cells;

## Background Information

Lamins are components of the nuclear lamina, a fibrous layer on the nucleoplasmic side of the inner nuclear membrane, which is thought to provide a framework for the nuclear envelope and may also interact with chromatin. The nuclear lamina consists of a two-dimensional matrix of proteins located next to the inner nuclear membrane. The lamin family of proteins make up the matrix and are highly conserved in evolution. During mitosis, the lamina matrix is reversibly disassembled as the lamin proteins are phosphorylated. Vertebrate lamins consist of two types, A and B. This gene encodes one of the two B type proteins, B1. This protein is not suitable for samples where the nuclear envelope has been removed. The antibody is conjugated with CL594, Ex/Em 593 nm/614 nm.

## Notable Publications

| Author | Pubmed ID | Journal | Application |
|--------|-----------|---------|-------------|
|--------|-----------|---------|-------------|

## Storage

Storage:

Store at -20°C. Stable for one year after shipment.

Storage Buffer:

PBS with 50% Glycerol, 0.05% Proclin300, 0.5% BSA, pH 7.3.

Aliquoting is unnecessary for -20°C storage

For technical support and original validation data for this

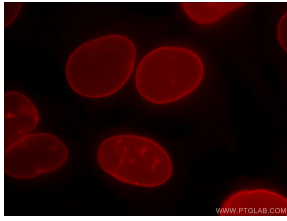
product please contact:

T: 1 (888) 4PTGLAB (1-888-478-4522) (toll free in USA), or 1(312) 455-8498 (outside USA)

E: [proteintech@ptglab.com](mailto:proteintech@ptglab.com)  
W: [ptglab.com](http://ptglab.com)

This product is exclusively available under Proteintech Group brand and is not available to purchase from any other manufacturer.

## Selected Validation Data



Immunofluorescent analysis of (-20°C Ethanol) fixed HepG2 cells using CL594-66095 (Lamin B1 antibody) at dilution of 1:200.