

For Research Use Only

# CoraLite®594-conjugated Alpha cardiac muscle actin specific Monoclonal antibody

Catalog Number: CL594-66125



## Basic Information

<b>Catalog Number:</b> CL594-66125	<b>GenBank Accession Number:</b> NM_005159	<b>Purification Method:</b> Protein G purification
<b>Size:</b> 100ul , Concentration: 1000 ug/ml by Nanodrop;	<b>GeneID (NCBI):</b> 70	<b>CloneNo.:</b> 1F2B9
<b>Source:</b> Mouse	<b>UNIPROT ID:</b> P68032	<b>Recommended Dilutions:</b> IF-P: 1:50-1:500
<b>Isotype:</b> IgG1	<b>Full Name:</b> actin, alpha, cardiac muscle 1	<b>FC (Intra):</b> 0.40 ug per 10 <sup>6</sup> cells in a 100 µl suspension
	<b>Calculated MW:</b> 42 kDa	<b>Excitation/Emission maxima wavelengths:</b> 588 nm / 604 nm

## Applications

<b>Tested Applications:</b> IF-P, FC (Intra)	<b>Positive Controls:</b>
<b>Species Specificity:</b> human, mouse, rat, pig	IF-P : mouse heart tissue, FC (Intra) : C2C12 cells,

## Background Information

Actins are highly conserved proteins that are involved in various types of cell motility and are ubiquitously expressed in all eukaryotic cells. The ACTC1 gene encodes cardiac muscle alpha-actin, the predominant actin isoform in adult heart, which interacts with a variety of proteins to produce the force for muscle contraction. This antibody is specific to the ACTC1. It does not cross-react with other actin isoforms. The antibody is conjugated with CL594, Ex/Em 593 nm/614 nm.

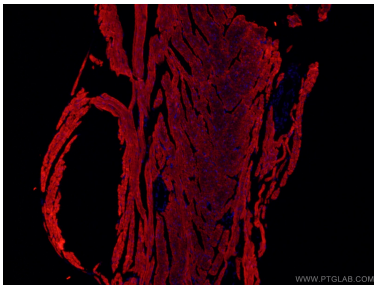
## Storage

**Storage:**  
Store at -20°C. Avoid exposure to light. Stable for one year after shipment.  
**Storage Buffer:**  
PBS with 50% glycerol, 0.05% Proclin300, 0.5% BSA, pH7.3  
**Aliquoting is unnecessary for -20°C storage**

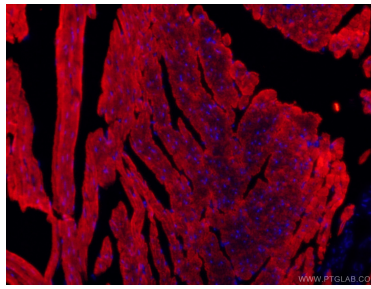
For technical support and original validation data for this product please contact:  
T: 1 (888) 4PTGLAB (1-888-478-4522) (toll free in USA), or 1(312) 455-8498 (outside USA)  
E: [proteintech@ptglab.com](mailto:proteintech@ptglab.com)  
W: [ptglab.com](http://ptglab.com)

This product is exclusively available under Proteintech Group brand and is not available to purchase from any other manufacturer.

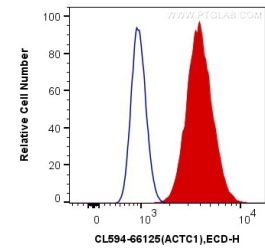
## Selected Validation Data



Immunofluorescent analysis of (4% PFA) fixed mouse heart tissue using CL594-66125 (ACTC1-specific antibody) at dilution of 1:100.



Immunofluorescent analysis of (4% PFA) fixed mouse heart tissue using CL594-66125 (ACTC1-specific antibody) at dilution of 1:100.



1X10<sup>6</sup> C2C12 cells were intracellularly stained with 0.4 ug CoraLite®594 Anti-Human ACTC1-specific (CL594-66125, Clone:1F2B9) (red), or 0.4 ug Mouse IgG1 Isotype Control (CL594-66360, Clone:T1F8D3F10) (blue). Cells were fixed with 4% PFA and permeabilized with Flow Cytometry Perm Buffer (PF00011-C).