

For Research Use Only

# CoraLite®594-conjugated C9orf72 Monoclonal antibody



Catalog Number:CL594-66140

## Basic Information

<b>Catalog Number:</b> CL594-66140	<b>GenBank Accession Number:</b> BC020851	<b>Purification Method:</b> Protein A purification
<b>Size:</b> 100UL, Concentration: 2000 µg/ml by Bradford method using BSA as the standard;	<b>GeneID (NCBI):</b> 203228	<b>CloneNo.:</b> 3D2H6
<b>Source:</b> Mouse	<b>Full Name:</b> chromosome 9 open reading frame 721F	<b>Recommended Dilutions:</b> 1:50-1:500
<b>Isotype:</b> IgG2a	<b>Calculated MW:</b> 481 aa, 54 kDa	<b>Excitation/Emission maxima wavelengths:</b> 593 nm/614 nm
<b>Immunogen Catalog Number:</b> AG21080	<b>Observed MW:</b> 55 kDa	

## Applications

<b>Tested Applications:</b> IF, ELISA	<b>Positive Controls:</b> IF : SH-SY5Y cells,
<b>Species Specificity:</b> human, mouse, rat	

## Background Information

C9ORF72 has a domain with polymorphic hexanucleotide repeat (GGGGCC). The C9ORF72-hexanucleotide repeat expansions have been recently identified as genetic markers in amyotrophic lateral sclerosis (ALS) and frontotemporal lobar degeneration (FTLD). FTLD-TDP has five subtypes: Sporadic FTLD, GRN mutation FTLD, TARDBP mutation FTLD, VCP mutation FTLD and C9ORF72 mutation FTLD. The C9ORF72 repeat expansions may indicate a worse prognosis in ALS. Human C9ORF72 has some isoforms with MW 54-60 kDa and 25-30 kDa. Mouse C9orf72 has some isoforms with MW 50-60 kDa and 35 kDa.

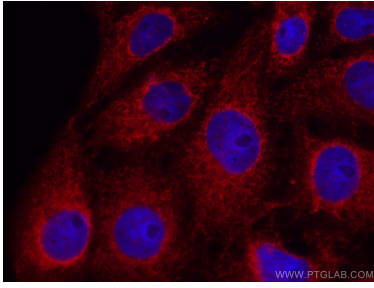
## Storage

**Storage:**  
Store at -20°C. Avoid exposure to light. Stable for one year after shipment.  
**Storage Buffer:**  
PBS with 50% Glycerol, 0.05% Proclin300, 0.5% BSA, pH 7.3.  
**Aliquoting is unnecessary for -20°C storage**

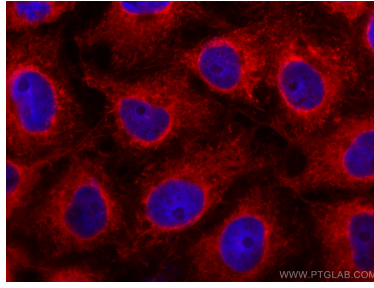
For technical support and original validation data for this product please contact:  
T: 1 (888) 4PTGLAB (1-888-478-4522) (toll free in USA), or 1(312) 455-8498 (outside USA)  
E: proteintech@ptglab.com  
W: ptglab.com

**This product is exclusively available under Proteintech Group brand and is not available to purchase from any other manufacturer.**

## Selected Validation Data



Immunofluorescent analysis of (-20°C Ethanol) fixed SH-SY5Y cells using CL594-66140 (C9orf72 antibody) at dilution of 1:50.



Immunofluorescent analysis of (-20°C Ethanol) fixed SH-SY5Y cells using CoraLite®594-conjugated C9orf72 antibody (CL594-66140, Clone: 3D2H6) at dilution of 1:100.