

For Research Use Only

CoraLite®594-conjugated IL-4 Monoclonal antibody

Catalog Number:CL594-66142

Featured Product



Basic Information

Catalog Number:

CL594-66142

Size:

100ul , Concentration: 1000 ug/ml by

Nanodrop;

Source:

Mouse

Isotype:

IgG2a

Immunogen Catalog Number:

AG9940

GenBank Accession Number:

BC070123

GeneID (NCBI):

3565

UNIPROT ID:

P05112

Full Name:

interleukin 4

Calculated MW:

153 aa, 17 kDa

Observed MW:

18 kDa

Purification Method:

Protein A purification

CloneNo.:

1G2C5

Recommended Dilutions:

IF/ICC 1:50-1:500

Excitation/Emission maxima

wavelengths:

588 nm / 604 nm

Applications

Tested Applications:

IF/ICC

Species Specificity:

human

Positive Controls:

IF/ICC : Raji cells,

Background Information

IL4 is a cytokine produced by CD4+ T cells in response to helminthes and other extracellular parasites. It promotes the proliferation and differentiation of antigen presenting cells. IL4 also plays a pivotal role in antibody isotype switching and stimulates the production of IgE. This cytokine has been applied in the treatment of autoimmune disorder like multiple myeloma, cancer, psoriasis, and arthritis. IL4 has also been extensively applied to inhibit detrimental effect of Th1. It may promote the growth of epithelial tumors by mediating increased proliferation and survival.

Storage

Storage:

Store at -20°C. Avoid exposure to light. Stable for one year after shipment.

Storage Buffer:

PBS with 50% Glycerol, 0.05% Proclin300, 0.5% BSA, pH 7.3.

Aliquoting is unnecessary for -20°C storage

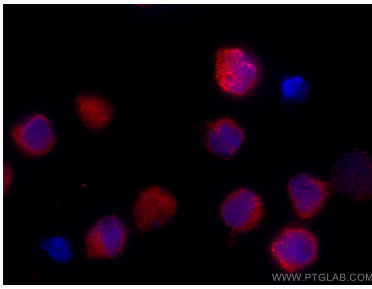
For technical support and original validation data for this product please contact:

T: 1 (888) 4PTGLAB (1-888-478-4522) (toll free
in USA), or 1(312) 455-8498 (outside USA)

E: proteintech@ptglab.com
W: ptglab.com

This product is exclusively available under Proteintech Group brand and is not available to purchase from any other manufacturer.

Selected Validation Data



Immunofluorescent analysis of (4% PFA) fixed Raji cells using CoraLite® 594 IL-4 antibody (CL594-66142, Clone: 1G2C5) at dilution of 1:200.