

For Research Use Only

# CoraLite®594-conjugated NSE Monoclonal antibody



Catalog Number:CL594-66150

## Basic Information

<b>Catalog Number:</b> CL594-66150	<b>GenBank Accession Number:</b> BC002745	<b>Purification Method:</b> Protein G purification
<b>Size:</b> 100UL, Concentration: 1670 µg/ml by 2026 Bradford method using BSA as the standard;	<b>GeneID (NCBI):</b> enolase 2 (gamma, neuronal)	<b>CloneNo.:</b> 6F8G3
<b>Source:</b> Mouse	<b>Full Name:</b> enolase 2 (gamma, neuronal)	<b>Recommended Dilutions:</b> IF 1:50-1:500
<b>Isotype:</b> IgG1	<b>Calculated MW:</b> 47 kDa	<b>Excitation/Emission maxima wavelengths:</b> 593 nm/614 nm
<b>Immunogen Catalog Number:</b> AG19106	<b>Observed MW:</b> 47 kDa	

## Applications

<b>Tested Applications:</b> IF, ELISA	<b>Positive Controls:</b> IF : mouse brain tissue,
<b>Species Specificity:</b> human, mouse, rat, pig	

## Background Information

NSE, also named as ENO2, belongs to the enolase family. Enolases are cytoplasmic glycolytic enzymes that may be involved in differentiation. The enolase has three isoenzymes, alpha, beta and gamma. The alpha form is expressed in most tissues, whereas the beta form is expressed in muscle tissue. The gamma enolase (ENO2), a homodimer, is primarily localized in neurons and neuroendocrine cells and is a cancer diagnostic marker for brain tumors (PMID:7520111). ENO2 plays a role in the glycolysis-related energy pathway and might be involved in higher metabolic activity during the day than at night, at least in part. And this antibody is conjugated with CL594, Ex/Em 593 nm/614 nm.

## Storage

**Storage:**  
Store at -20°C. Avoid exposure to light. Stable for one year after shipment.  
**Storage Buffer:**  
PBS with 0.02% sodium azide and 50% glycerol pH 7.3.  
Aliquoting is unnecessary for -20°C storage

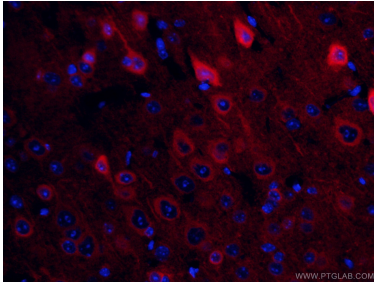
For technical support and original validation data for this product please contact:

T: 1 (888) 4PTGLAB (1-888-478-4522) (toll free  
in USA), or 1(312) 455-8498 (outside USA)

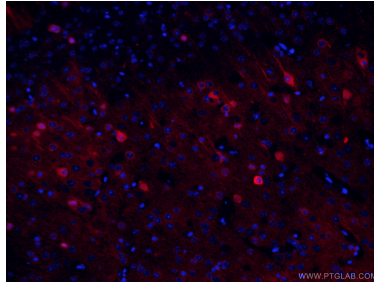
E: proteintech@ptglab.com  
W: ptglab.com

**This product is exclusively available under Proteintech Group brand and is not available to purchase from any other manufacturer.**

## Selected Validation Data



Immunofluorescent analysis of (4% PFA) fixed mouse brain tissue using CL594-66150 (NSE antibody) at dilution of 1:50.



Immunofluorescent analysis of (4% PFA) fixed mouse brain tissue using CL594-66150 (NSE antibody) at dilution of 1:50.