

For Research Use Only

CoraLite®594-conjugated CRP Monoclonal antibody



Catalog Number:CL594-66250

Basic Information

Catalog Number: CL594-66250	GenBank Accession Number: BC020766	Purification Method: Protein A purification
Size: 100UL, Concentration: 1000 µg/ml by 1401 Nanodrop;	GeneID (NCBI): 1401	CloneNo.: 3F10A11
Source: Mouse	Full Name: C-reactive protein, pentraxin-related	Recommended Dilutions: IF 1:50-1:500
Isotype: IgG2a	Calculated MW: 224 aa, 25 kDa	Excitation/Emission maxima wavelengths: 593 nm/614 nm
Immunogen Catalog Number: AG9883	Observed MW: 27 kDa	

Applications

Tested Applications: IF, ELISA	Positive Controls: IF : human liver tissue,
Species Specificity: human, mouse, rat, pig	

Background Information

C-reactive protein (CRP) is an acute-phase serum protein synthesized by the liver in response to interleukin-6 (IL-6) during inflammation. The name of CRP derives from its ability to react with the C polysaccharide of *Streptococcus pneumoniae*. CRP is an annular, pentameric protein that belongs to the pentraxin family of proteins. CRP displays several functions associated with host defense: it promotes agglutination, bacterial capsular swelling, phagocytosis and complement fixation through its calcium-dependent binding to phosphorylcholine. It is used mainly as a marker of inflammation.

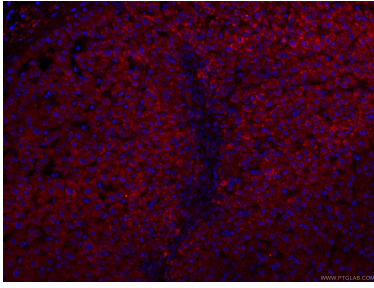
Storage

Storage:
Store at -20°C. Avoid exposure to light. Stable for one year after shipment.
Storage Buffer:
PBS with 50% Glycerol, 0.05% Proclin300, 0.5% BSA, pH 7.3.
Aliquoting is unnecessary for -20°C storage

For technical support and original validation data for this product please contact:
T: 1 (888) 4PTGLAB (1-888-478-4522) (toll free in USA), or 1(312) 455-8498 (outside USA)
E: proteintech@ptglab.com
W: ptglab.com

This product is exclusively available under Proteintech Group brand and is not available to purchase from any other manufacturer.

Selected Validation Data



Immunofluorescent analysis of (4% PFA) fixed human liver tissue using CL594-66250 (CRP antibody) at dilution of 1:100.