

For Research Use Only

CoraLite®594-conjugated GLUT1 Monoclonal antibody

Catalog Number: CL594-66290

Featured Product



Basic Information

Catalog Number:

CL594-66290

Size:

100ul , Concentration: 1000 ug/ml by Nanodrop;

Source:

Mouse

Isotype:

IgG1

Immunogen Catalog Number:

AG17108

GenBank Accession Number:

BC121804

GeneID (NCBI):

6513

UNIPROT ID:

P11166

Full Name:

solute carrier family 2 (facilitated glucose transporter), member 1

Calculated MW:

492 aa, 54 kDa

Observed MW:

45-55 kDa

Purification Method:

Protein G purification

CloneNo.:

2A5A2

Recommended Dilutions:

IF-P 1:50-1:500

Excitation/Emission maxima wavelengths:

588 nm / 604 nm

Applications

Tested Applications:

IF-P, FC (Intra)

Species Specificity:

human, mouse

Positive Controls:

IF-P : human lung cancer tissue,

Background Information

GLUT1, also known as SLC2A1, is an ubiquitously expressed glucose transporter and responsible for the basal level of glucose uptake in most cell types. Human erythrocytes express the highest level of the GLUT1. Defects in SLC2A1 are the cause of GLUT1 deficiency syndrome type 1 and type 2. High expression of GLUT1 has been reported to be a reliable immunohistochemical marker for juvenile hemangiomas. GLUT1 protein may appear as two or more distinct forms among 43 kDa to 55 kDa due to the different glycosylation state. And the conversion of highly glycosylated form of GLUT1 to less glycosylated form has been reported to correlate to differentiation (PMID: 8263524, 23302780). 66290-1-Ig antibody can also detect the 130 kDa dimer protein in SDS-PAGE (PMID: 11681785).

Storage

Storage:

Store at -20°C. Avoid exposure to light. Stable for one year after shipment.

Storage Buffer:

PBS with 50% glycerol, 0.05% Proclin300, 0.5% BSA, pH7.3

Aliquoting is unnecessary for -20°C storage

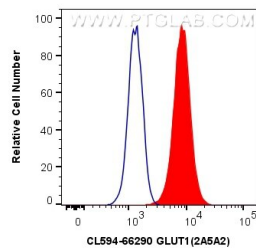
For technical support and original validation data for this product please contact:

T: 1 (888) 4PTGLAB (1-888-478-4522) (toll free in USA), or 1(312) 455-8498 (outside USA)

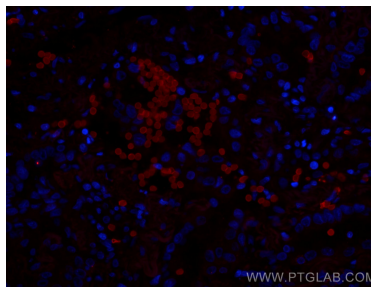
E: proteintech@ptglab.com
W: ptglab.com

This product is exclusively available under Proteintech Group brand and is not available to purchase from any other manufacturer.

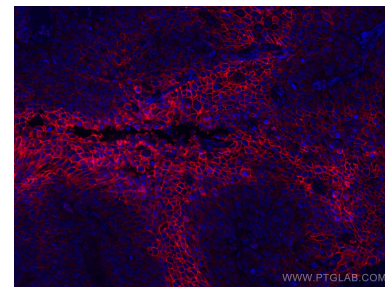
Selected Validation Data



1×10^6 Jurkat cells were intracellularly stained with 0.4 μ g CoraLite® 594 Anti-Human GLUT1 (CL594-66290, Clone: 2A5A2) (red), or 0.4 μ g Control Antibody. Cells were fixed with 4% PFA and permeabilized with Flow Cytometry Perm Buffer (PF00011-C).



Immunofluorescent analysis of (4% PFA) fixed human lung cancer tissue using CoraLite® 594 GLUT1 antibody (CL594-66290, Clone: 2A5A2) at dilution of 1:200.



Immunofluorescent analysis of (4% PFA) fixed paraffin-embedded human lung cancer tissue using CoraLite® 594 GLUT1 antibody (CL594-66290, Clone: 2A5A2) at dilution of 1:200. Heat mediated antigen retrieval with Tris-EDTA buffer (pH 9.0).