

For Research Use Only

# CoraLite®594-conjugated Gamma Tubulin Monoclonal antibody



Catalog Number: **CL594-66320**

## Basic Information

<b>Catalog Number:</b> CL594-66320	<b>GenBank Accession Number:</b> BC000619	<b>Purification Method:</b> Protein A purification
<b>Size:</b> 100UL, Concentration: 1000 µg/ml by Nanodrop;	<b>GeneID (NCBI):</b> 7283	<b>CloneNo.:</b> 3F9H8
<b>Source:</b> Mouse	<b>Full Name:</b> tubulin, gamma 1	<b>Recommended Dilutions:</b> IF 1:50-1:500
<b>Isotype:</b> IgG2a	<b>Calculated MW:</b> 51 kDa	<b>Excitation/Emission maxima wavelengths:</b> 593 nm/614 nm
<b>Immunogen Catalog Number:</b> AG23913	<b>Observed MW:</b> 48-55 kDa	

## Applications

<b>Tested Applications:</b> IF, ELISA	<b>Positive Controls:</b> IF : MDCK cells,
<b>Species Specificity:</b> human, dog, mouse, rat	

## Background Information

Gamma tubulin is a member of tubulin superfamily and is a key component required for microtubule nucleation and stabilization. It is concentrated at the pericentriolar material of centrosomes in interphase cells, predominantly on spindle poles in mitotic cells, while found in midbodies during cytokinesis. Overexpression of gamma tubulin has been found in various cancers including breast cancer and gliomas. This antibody can well label the centrosome structure.

## Storage

**Storage:**  
Store at -20°C. Avoid exposure to light. Stable for one year after shipment.  
**Storage Buffer:**  
PBS with 50% Glycerol, 0.05% Proclin300, 0.5% BSA, pH 7.3.  
Aliquoting is unnecessary for -20°C storage

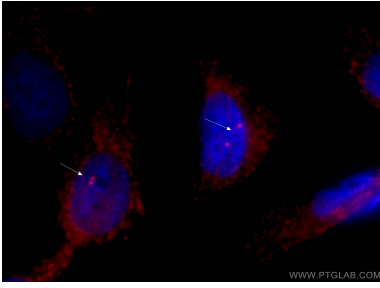
For technical support and original validation data for this product please contact:

T: 1 (888) 4PTGLAB (1-888-478-4522) (toll free in USA), or 1(312) 455-8498 (outside USA)

E: [proteintech@ptglab.com](mailto:proteintech@ptglab.com)  
W: [ptglab.com](http://ptglab.com)

**This product is exclusively available under Proteintech Group brand and is not available to purchase from any other manufacturer.**

## Selected Validation Data



Immunofluorescent analysis of (-20°C Ethanol) fixed MDCK cells using CL594-66320 (gamma tubulin antibody) at dilution of 1:50.