

For Research Use Only

CoraLite®594-conjugated Glutamine Synthetase Monoclonal antibody



Catalog Number: ~~CL594-66323~~

Featured Product

Basic Information

Catalog Number:
CL594-66323

Size:
100UL , Concentration: 1000 µg/ml by
Bradford method using BSA as the
standard;

Source:
Mouse

Isotype:
IgG1

Immunogen Catalog Number:
AG6309

GenBank Accession Number:
BC011700

GeneID (NCBI):

Full Name:
glutamate-ammonia ligase
(glutamine synthetase)

Calculated MW:
374 aa, 42 kDa

Purification Method:
Protein G purification

CloneNo.:
1B6G4

Recommended Dilutions:
IF 1:50-1:500

Excitation/Emission maxima
wavelengths:
593 nm/614 nm

Applications

Tested Applications:
IF, ELISA

Species Specificity:
Human

Positive Controls:

IF : mouse brain tissue,

Background Information

GLUL(Glutamine synthetase) is also named as GS, GLNS and belongs to the glutamine synthetase family. This enzyme has 2 functions: it catalyzes the production of glutamine and 4-aminobutanoate (gamma-aminobutyric acid, GABA), the latter in a pyridoxal phosphate-independent manner. By similarity. Essential for proliferation of fetal skin fibroblasts (PMID:18662667). Defects in GLUL are the cause of congenital systemic glutamine deficiency (CSGD). Organismal glutamine production is augmented secondary to an increase in the activity of glutamine synthetase in the lung and skeletal muscle (PMID:7630137). The antibody is conjugated with CL594, Ex/Em 593 nm/614 nm.

Storage

Storage:

Store at -20°C. Avoid exposure to light. Stable for one year after shipment.

Storage Buffer:

PBS with 0.1% sodium azide and 50% glycerol pH 7.3.

Aliquoting is unnecessary for -20°C storage

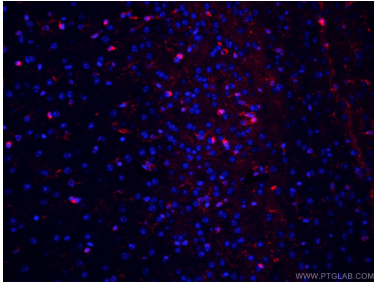
For technical support and original validation data for this product please contact:

T: 1 (888) 4PTGLAB (1-888-478-4522) (toll free
in USA), or 1(312) 455-8498 (outside USA)

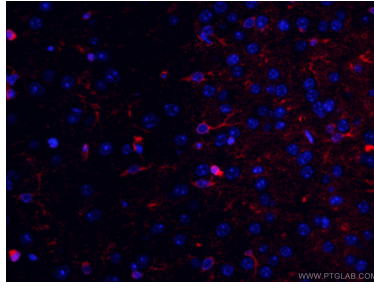
E: proteintech@ptglab.com
W: ptglab.com

This product is exclusively available under Proteintech Group brand and is not available to purchase from any other manufacturer.

Selected Validation Data



Immunofluorescent analysis of (4% PFA) fixed mouse brain tissue using CL594-66323 (Glutamine synthetase antibody) at dilution of 1:50.



Immunofluorescent analysis of (4% PFA) fixed mouse brain tissue using CL594-66323 (Glutamine synthetase antibody) at dilution of 1:50.